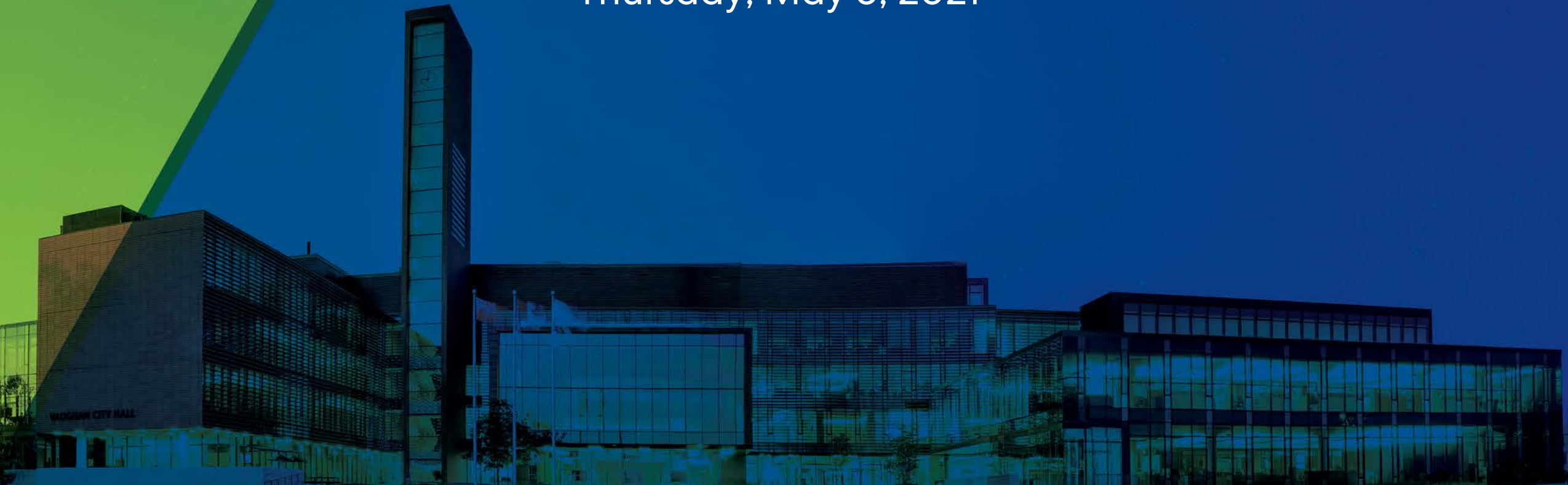




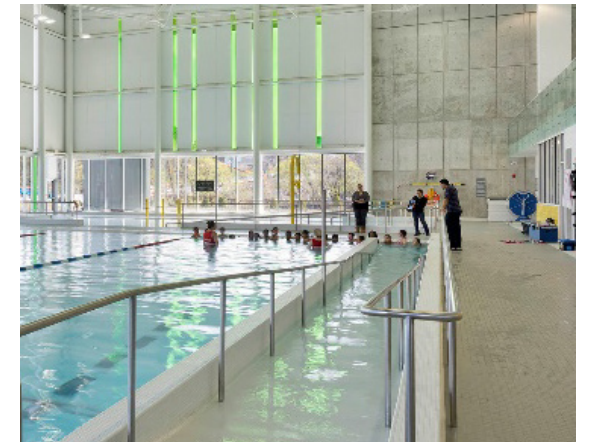
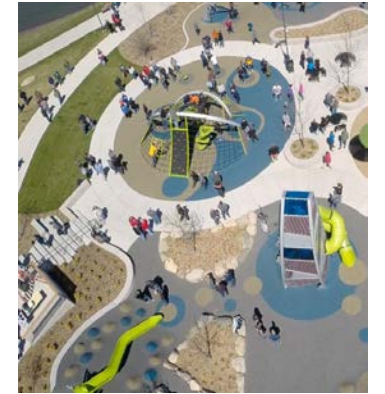
Carrville Community Centre, Library and District Park

Virtual Public Information Session
Thursday, May 6, 2021



Welcome

- Opening remarks from Ward 4 Councillor, Sandra Yeung Racco
- Remarks from Vaughan Public Library Board Chair, Rose Savage



Agenda

Speakers

- Phil Fenech – Perkins&Will Architects
- Jon Loewen – Perkins&Will Architects
- Jon Joyce – MBTW Landscape Architects

Agenda

- Introduction
- Work done to date
- Context and program
- Project goals
- Your input
- Site considerations
- Current design
- Next steps

Protocol

- Presentation by P&W and MBTW
- Including response to previous comments and input from community
- Chat and un-mute functions are not available on this call
- Questions and comments on this presentation can be sent to the City via email
- Links to the email address and the project specific website will be posted at the end of this presentation
- This call will be recorded



Introduction

Today's Objective

- Become informed on the design progress
- See how programs have been incorporated
- See how your feedback has been addressed
- Learn about the next steps towards construction and completion

Introduction

Project Objectives



Support



Explore



Improve



Recharge



Play



Create



Learn



Connect



Move

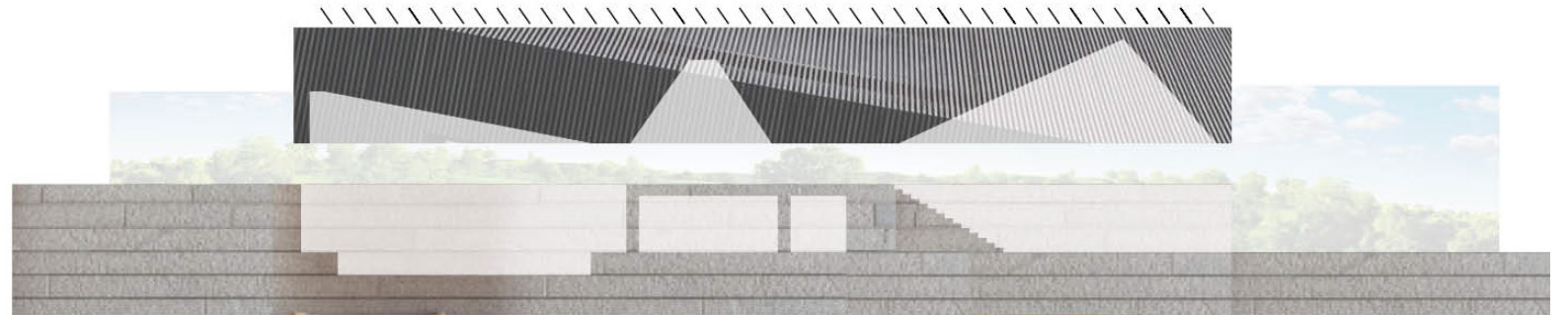
Work Done to Date

Public Meetings and Online Surveys

- This is the third Public Information Session
- At the virtual Public Information Session held on July 9, 2020, we had approximately 60 households “dial in” to listen to the presentation
- There were approximately 425 responses received to the online survey, which became available the following day
- The City posted responses to questions from the online survey on the Carrville project website at vaughan.ca/CarrvilleCC

Context and Program

Understanding the Site and
Development of the Programming



Context and Program

Topography and Natural Edges

Existing site offers many great opportunities:

- Easily accessed by many modes of travel
- Adjacent to a protected ravine environment
- Will act as catalyst for development
- Slope affords potential for outlook and exciting park uses



Context and Program

Building Program

The building will include a range of spaces that can serve many activities:

- Library
- Aquatics and change rooms
- Fitness
- Gym
- Track
- Multi-purpose room
- Support and administration
- Partner spaces
- Exterior ice trail and park change rooms

Each component of the building will be accessible, comfortable and easily connected to the common public spaces.



multi-use rooms



ice trail/park change room



fitness



library



common areas



gym + track



aquatics centre



partner spaces

Context and Program

Park Program

- Open space
- Tennis courts
- Basketball court
- Playground
- Water play
- Skate trail
- Active zone
- Library terrace
- Childcare outdoor play
- Trails/flex/shade/seating
- Fitness and activity area
- Pump track

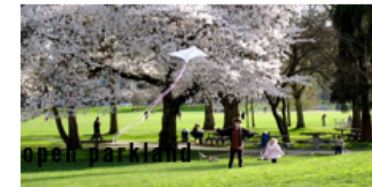
The park includes a family zone, active zone and passive zones. There will be access to skate/water play change rooms, seasonal washrooms, and mechanical/equipment support for the skate trail.



tennis courts



ice skating trail



open parkland



basketball



water play



playground



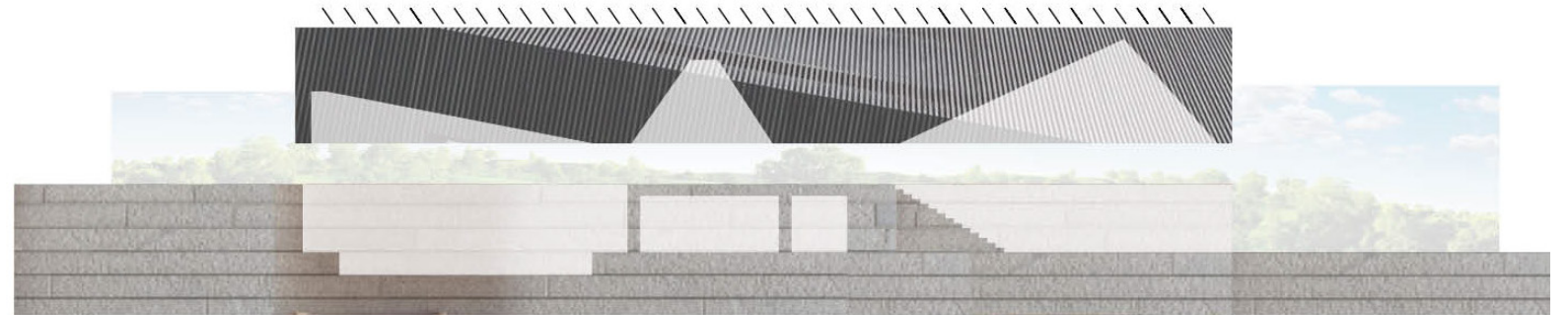
trail



pump track

Project Goals

Before designing, we collectively set the following goals to guide us through the process and help us make decisions.





Project Goals

Six Measures of Success

1. **Welcoming to all** : Inclusive of all generations, genders and cultures
2. **Strong placemaking** : Common spaces that support community activities
3. **A vibrant park** : A range of park experiences
4. **Higher sustainability** : Strive for a better relationship with the environment
5. **Best value** : Provide an enduring civic investment
6. **A healthy community** : Support pursuit of well-being in a post COVID-19 world

Your Input

Ranking Key Experiences

From Public Info Session 2 – Survey and Call

- **Public use:** Provide spaces to play, study, spectate, perform and display art
- **Top building activities:** swimming, learning, walking, fitness and sports
- **Top park activities:** walking, skating, playground, tennis, gathering/socializing
- **Access:** Most would drive but biking and walking were very important alternatives

Your Input

Additional Comments

From Public Info Session 2 – Survey and Call

Suggestions:

- Light the tennis courts
- Good sightlines for parents supervising children using parks
- Separate zones for children of different ages
- More natural light and big windows
- Lots of greenery and planting
- Larger skate trail

Other Ideas:

- Community gardens, pickleball, spinning classes, all season use, back up power and generator, outdoor gym equipment

Your Input

Some FAQs

On Project Website:

- **Building area** = 92,000 square feet
- **Library area** = 8,500 square feet
- **Park area** = 4.1 hectare park
- **Age group**: intergenerational allowing all ages to participate
- **Trails**: provided within the park but also planned for expansion to connect west, south and north
- **Construction time**: complete by Fall 2024
- **Pandemic response**: ample spaces for passage and gathering / touchless fixtures and door operators / improved air circulation and range of seating options

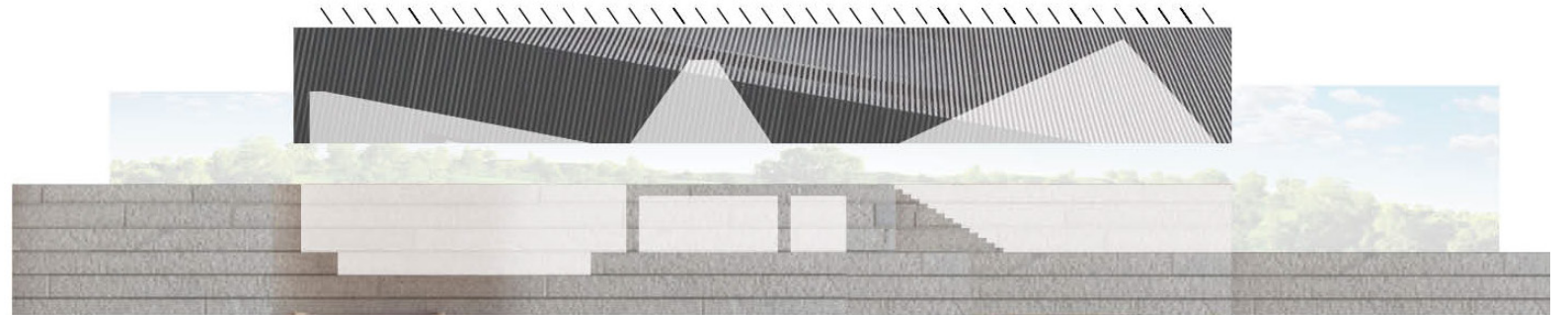
Your Input

Sustainable Priorities

- **Higher indoor air quality:** ensure ample air circulation
- **Energy efficiency:** reduce impact on resources
- **On site renewable energy:** possible photovoltaic panel array
- **Water conservation:** reduce within the building and on site
- **Transit options to the site:** travel by foot, cycle and transit
- **Green education:** demonstrate building performance

Site Considerations

Architecture and Landscape Development



Site Considerations

Existing Site : Topography and Trees



Site Considerations

Built Context Analysis



Built Context

- Naturalized east from north-east to south-east
- Adjacent institutions: school and church
- Details of future development unknown

Site Considerations

Site Access



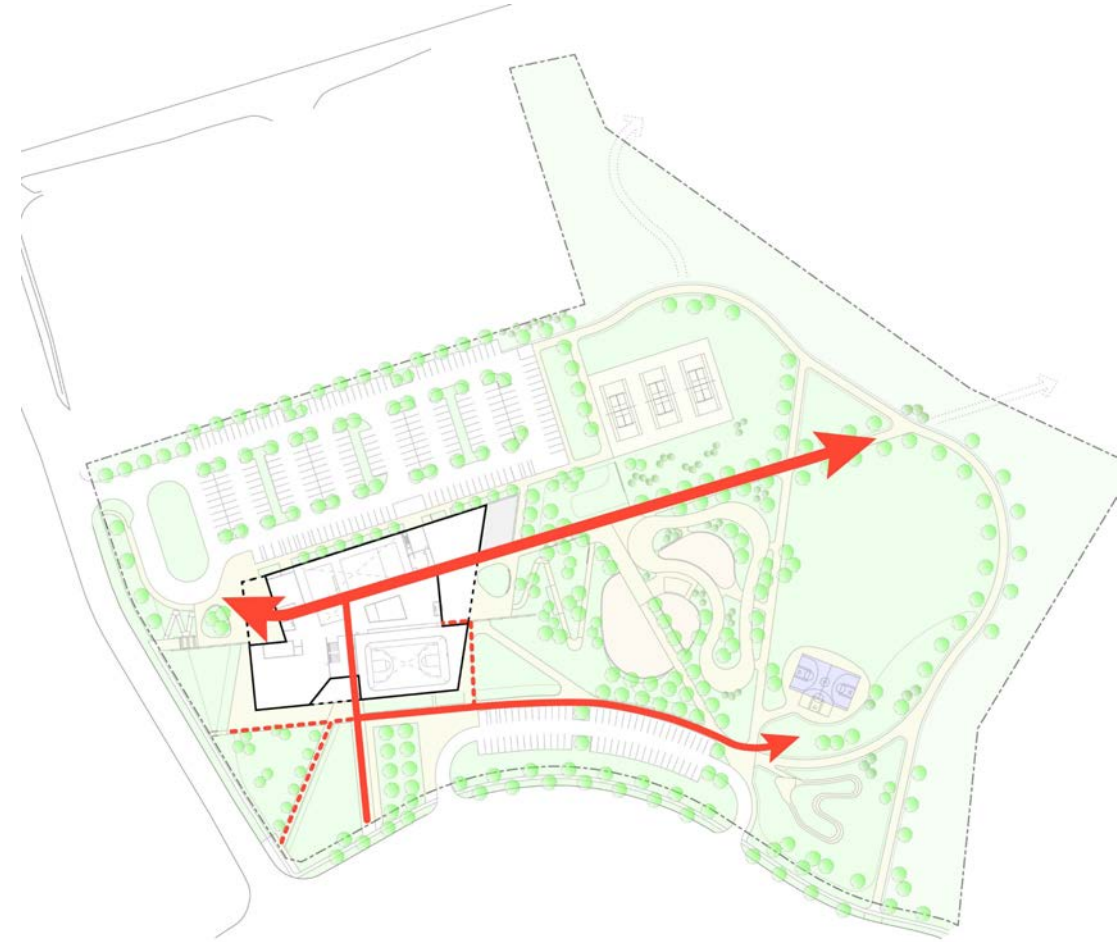
Site Access

- Primary pedestrian access from south and west
- Vehicle access exclusively from south and west
- Potential connections to trail system

Site Considerations

Pedestrian Movement

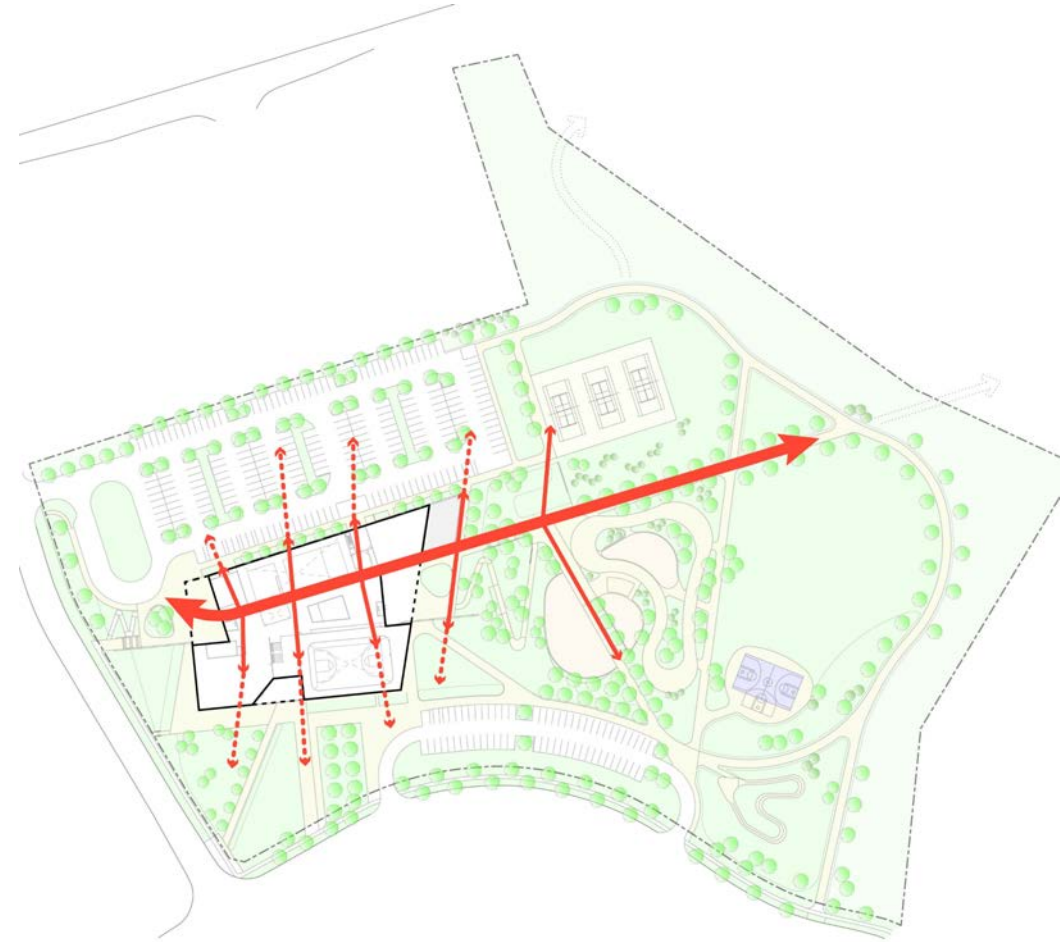
- Building acts as a gateway into the park
- Central path of travel connects interior and exterior uses
- Good pedestrian and transit access to park
- South parking moved closer to building
- Moments of nature intermingled with park activities



Site Considerations

Public Pathways

- Spaces and rooms are planned around a central pathway
- Pathway identifies a route within the building that allows users to see a variety of activities
- Pathway extends into park



Site Considerations

Creating Comfortable Exterior Spaces

- Landscaping protects users from winds and the sun





Site Considerations

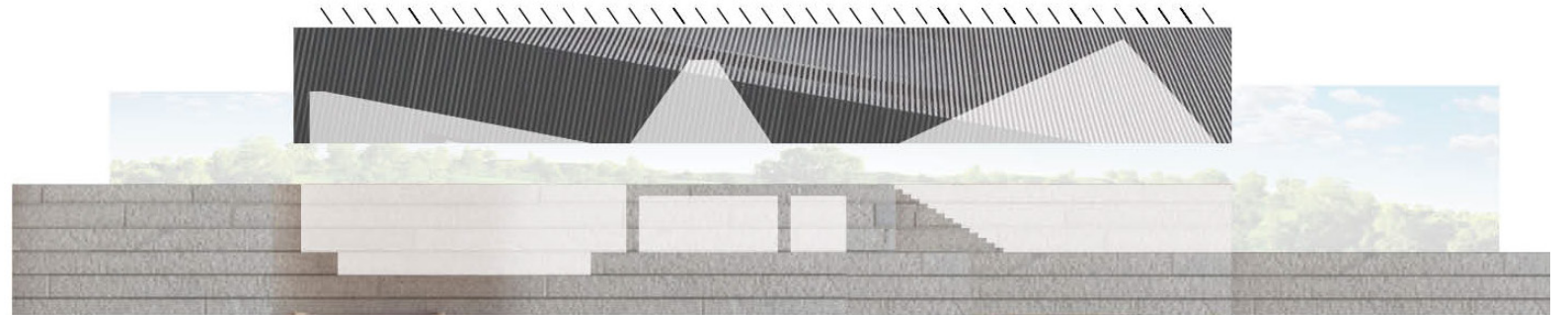
Safety Considerations

- Good visibility into and out from the entry court to the park view plaza



Current Design

An Update of the Building and Landscape



Current Design

Site Plan

1. North parking and drop off
2. Entry court
3. Parkview plaza
4. Filter gardens
5. Fitness/activity space
6. Tree cluster
7. Support lawn
8. Playground
9. Waterplay
10. Skate trail
11. Open lawn
12. Multi-use court
13. South parking lot
14. Pump track
15. Stormwater bio retention
16. Tennis/pickleball courts
17. Park support pavilion below
 - Splash pad and skate change
 - Park washrooms
 - Zamboni



Response to Your Input

- Spaces to play, perform and gather
- Provides all key park features
- Provision of future community gardens
- Integration of accessibility throughout
- Supports all season use
- Includes a network of trails
- Low impact development

Current Design

Lower Level



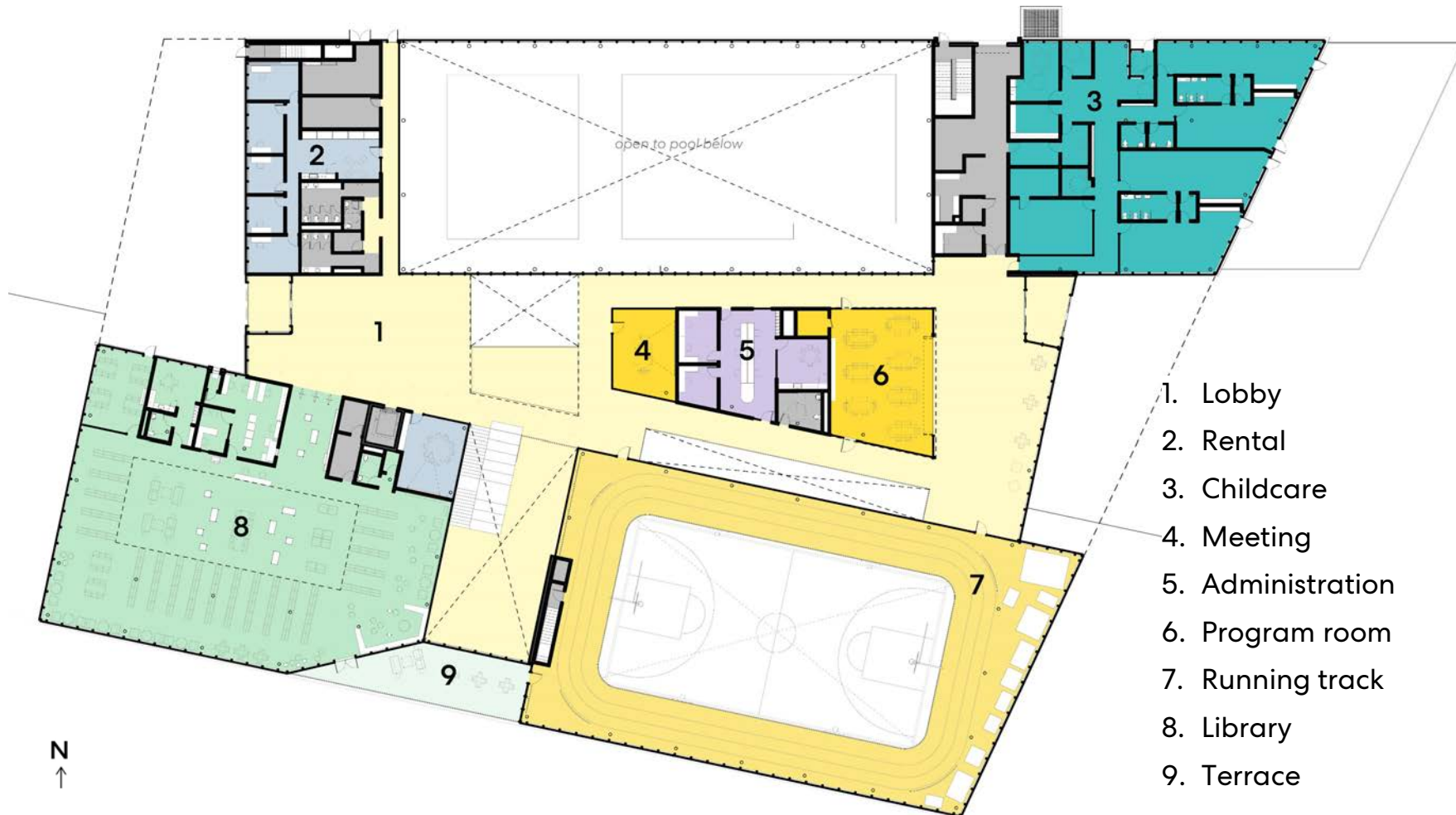
1. Lobby
2. Universal change room
3. Pool
4. Aquatic monitor/staff room
5. Aquatic change room
6. Fitness change room
7. Program room
8. Control desk
9. Pool mechanical
10. Refrigeration room
11. Fitness studios
12. Multipurpose storage
13. Multipurpose room
14. Teaching kitchen
15. Gym
16. Gym storage

Response to Your Input

- Ease of access
- Delivery of every program promised
- Connection to exterior
- Accessible and inclusive support spaces
- Welcoming and safe

Current Design

Upper Level



Response to Your Input

- Ease of access
- Delivery of every program promised
- Connection to exterior
- Accessible and inclusive support spaces
- Welcoming and safe

Current Design

Sustainability Goals

- **Leadership in Energy and Environmental Design (LEED) Gold** certification
- **Net Zero Carbon Certification** – reducing or offsetting greenhouse gases from energy use

Those targets include the following:

- Geothermal system
- Photovoltaic array
- Lower water use
- Low impact landscaping
- Improved indoor air circulation and quality
- EV charging stations
- High performance heating and cooling
- Improved insulation



Response to Your Input

- Addresses all the project targets
- Improves both interior and exterior environments
- Aims for much higher than conventional buildings and parks

Current Design

Accessibility and Inclusivity

- Planning to exceed minimum accessibility standards set by codes and regulations
- Aiming for Gold level certification from the Rick Hansen Foundation



Response to Your Input

- Meets the first goal of the project to be welcoming to all
- Ensures intergenerational use and total access

Current Design

Section: Entry, Lobby and Pool



Early conceptual rendering – final design and material selections to be developed

Current Design

Library Interior



Early conceptual rendering – final design and material selections to be developed

Current Design

Gymnasium and Track Interior



Early conceptual rendering – final design and material selections to be developed

Current Design

South Entry Lobby



Early conceptual rendering – final design and material selections to be developed

Current Design

West Entry Lobby with View to Lower Lobby



Early conceptual rendering – final design and material selections to be developed

Current Design

Park View Plaza and West Entry



Early conceptual rendering – final design and material selections to be developed

Current Design

Exterior View - West Entry Court



Early conceptual rendering – final design and material selections to be developed

Current Design

Exterior View – South Filter Garden and Entry



Early conceptual rendering – final design and material selections to be developed

Next Steps

Process and Timeline

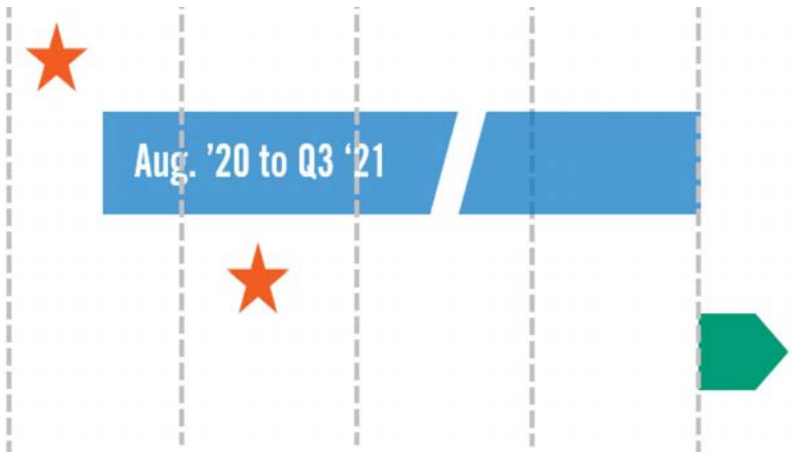
Public Information Session 2 July 2020

Detailed Design

Public Information Session 3 May 2021

Tender Fall 2021

Construction completion Fall 2024



Keep in Touch

Thank you for joining us. Let's continue the conversation online.

Questions?

Please send any questions to:
carrvillecc@vaughan.ca

Follow progress by visiting
vaughan.ca/CarrvilleCC



Thank You.

