



Natural Heritage Network Study

- Phase 1

Presentation for Public Consultation Meeting #1

June 28, 2012

Multi-Purpose Room, Vaughan City Hall



THE FOUR COMPONENTS OF VAUGHAN TOMORROW

- *Vaughan Vision 20/20*
 - The City's Strategic Plan
 - The originating document for *Vaughan Tomorrow*
- *Green Directions Vaughan*
 - The Community Sustainability and Environmental Master Plan;
- *VOP 2010*
 - The City's land use, design and development plan to guide the growth of the City to 2031
- *The Master Plans*
 - Dealing with services and infrastructure to support the preparation VOP 2010 and its implementation.



A NEW PROVINCIAL AND REGIONAL PLANNING FRAMEWORK IS IN PLACE



PLANNING FRAMEWORK

- Apply Provincial/Regional growth forecasts
- Protect Greenbelt and other Countryside/Natural Features
- Set intensification targets
- Identify any employment land use conversions
- Minimize urban boundary expansions
- Vaughan allocated:
 - 416,600 population
 - 266,100 employment

20% of Vaughan is designated as Employment Areas to support economic and job growth



LAND USE DESIGNATIONS

- General Employment
- Prestige Employment
- Employment Commercial Mixed-Use

NEW EMPLOYMENT AREAS

- 400 North Employment Area (OPA 637)
- West Vaughan Employment Area Secondary Plan

EXPANSION AREAS



3% urban boundary expansion

- New Community Areas (Blocks 41 & 27)
- *Council Resolution for Phasing of New Community Areas (revised June 2012)*
- Hwy 400 North Employment Area
- Expansion areas will require a Secondary Plan and Block Plans
- GTA West Transportation Corridor

40% of Vaughan is protected as Green/Open Space: Natural Areas and Countryside



LAND USE DESIGNATIONS

- Permitted land uses within Oak Ridges Moraine Plan and Greenbelt Plan
- Natural Areas
- Parks
- Private Open Spaces
- Agricultural
- Rural



PROVINCIAL: OAK RIDGES MORAINE & GREENBELT

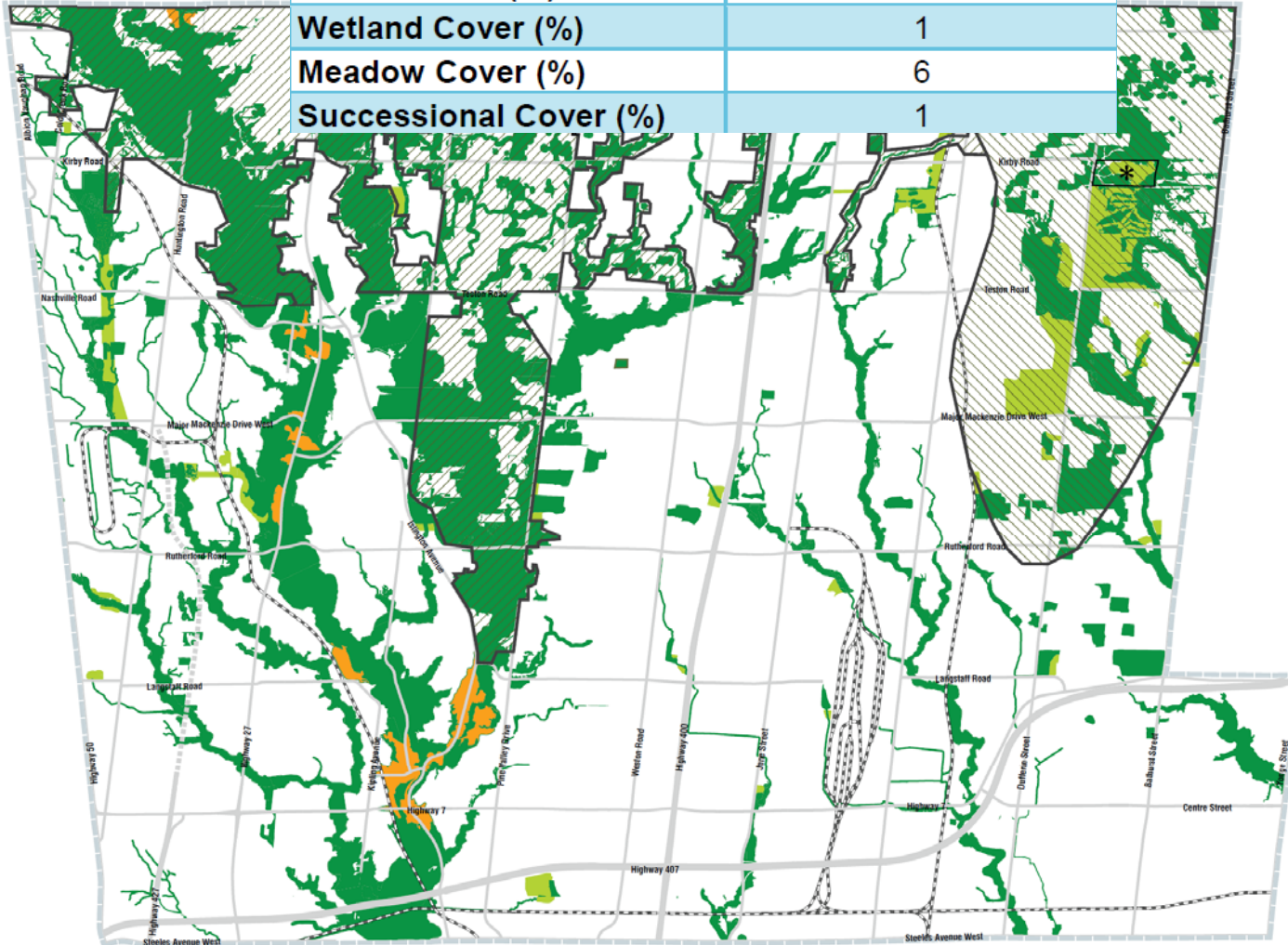




Natural Heritage Network (NHN) and Natural Heritage Systems Planning

NATURAL HERITAGE NETWORK

Cover Type	% of City of Vaughan
Natural Cover (%)	20
Forest Cover (%)	16
Wetland Cover (%)	1
Meadow Cover (%)	6
Successional Cover (%)	1



SCHEDULE 2

Natural Heritage Network

- Core Features
- Enhancement Areas
- Built-Up Valley Lands
- Greenbelt Plan Area¹
- Oak Ridges Moraine Conservation Plan Area¹
- * Minister's Decision on ORMCP Designation Deferred
- Municipal Boundary

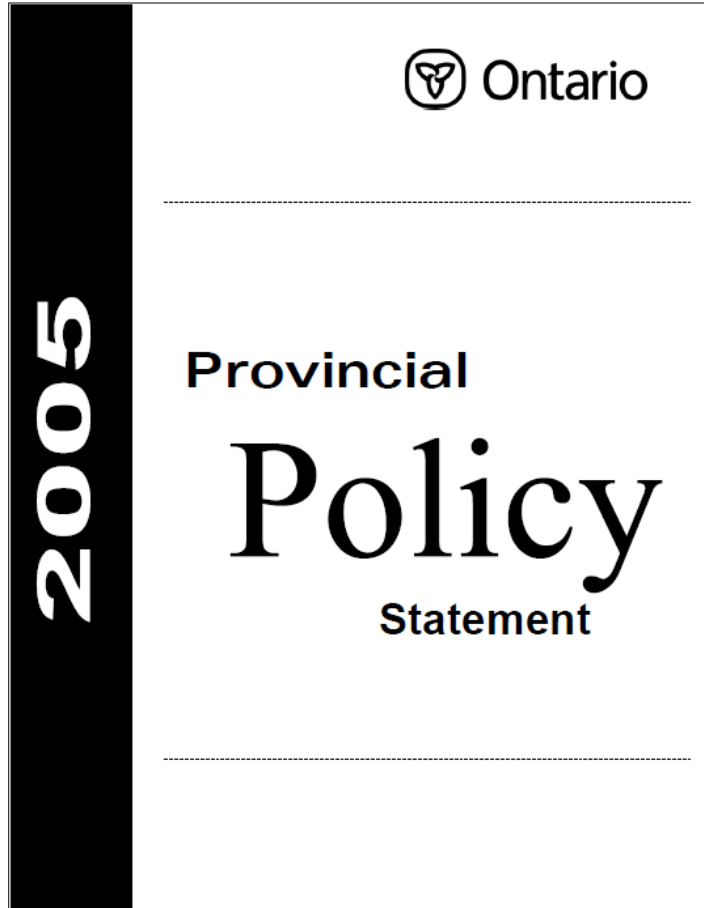
This Schedule is subject to change based on the results of the Natural Heritage Network Study, which will define the Natural Heritage Network by both its natural features and as a natural heritage system in accordance with the Provincial Policy Statement.

The policy text in Chapter 3 prevails over the mapping shown on Schedule 2 in determining the Natural Heritage Network.

¹ See Schedule 4 for limits and land use information of the Greenbelt Plan Area and Oak Ridges Moraine Conservation Plan Area



PROVINCIAL POLICY STATEMENT



- 2.1.2 The diversity and connectivity of natural features in an area, and the **long-term ecological function and biodiversity** of *natural heritage systems*, should be maintained, restored or, where possible, improved, recognizing linkages between and among *natural heritage features and areas*, *surface water features* and *ground water features*.
- Natural heritage system: means a system made up of *natural heritage features and areas*, linked by natural corridors which are necessary to maintain biological and geological diversity, natural functions, viable populations of indigenous species and ecosystems. These systems can include lands that have been restored and areas with the potential to be restored to a natural state.

NATURAL HERITAGE REFERENCE MANUAL

As with a features-based approach, systems delineated through a **landscape-based approach** should be assessed to identify major core areas, linkages and missing attributes. In some cases, a landscape-based approach taken by a planning authority may determine that some previously unevaluated features (e.g., areas that serve as temporary refuges or stepping stones for species movement or provide representation of a wider range of habitats) **are “significant”** as defined in the PPS, due to their role as part of the identified natural heritage system

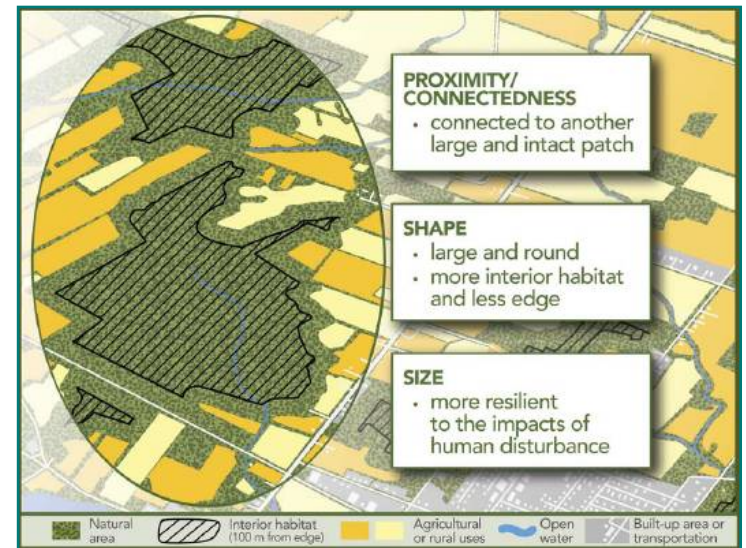




STUDY PHASES

- Natural Heritage Network Study
 - Phase 1 - Clean up existing data and set biodiversity/ecological function targets
 - Phase 2 – field investigations re Sig. Wildlife Habitat and headwaters evaluation
 - Phases 3 and 4 – Final Report with scan of land securement approaches

- Environmental Management Guidelines
 - Focus on scope of MESP and EIS given the Natural Heritage Network



NHN PHASE 1 TASKS

- inventory of the NHN constituent parts compiled in a comprehensive GIS database;
- setting ecosystem targets;
- undertaking a gap assessment of the biodiversity contribution and ecological functions of the existing NHN against the ecosystem targets;
- bringing forward the revised Environmental Management Guideline (EMG) for public review and consultation; and
- providing recommendations for field investigations in subsequent phases of the study.



NHN PHASE 1 TIMING

- Phase 1 Steering Committee includes York Region, OMNR, TRCA, Development Planning, Information and Technology Management, Parks Development, Development Engineering
- November Report to Committee of the Whole for Phase 1

Tasks	May	Jun	Jul	Aug	Sep	Oct
Comprehensive GIS Database	Δ	Δ				
Ecosystem Targets			Δ			
Gap Analysis				Δ		
Environmental Management Guideline					Δ	
Preliminary Methodology for Field Investigations					Δ	
Draft and final report preparation						Δ

- Terms of Reference for Phases 2-4 to future Committee of the Whole



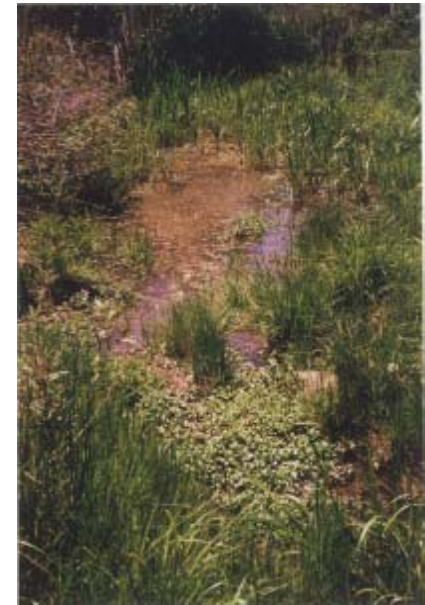
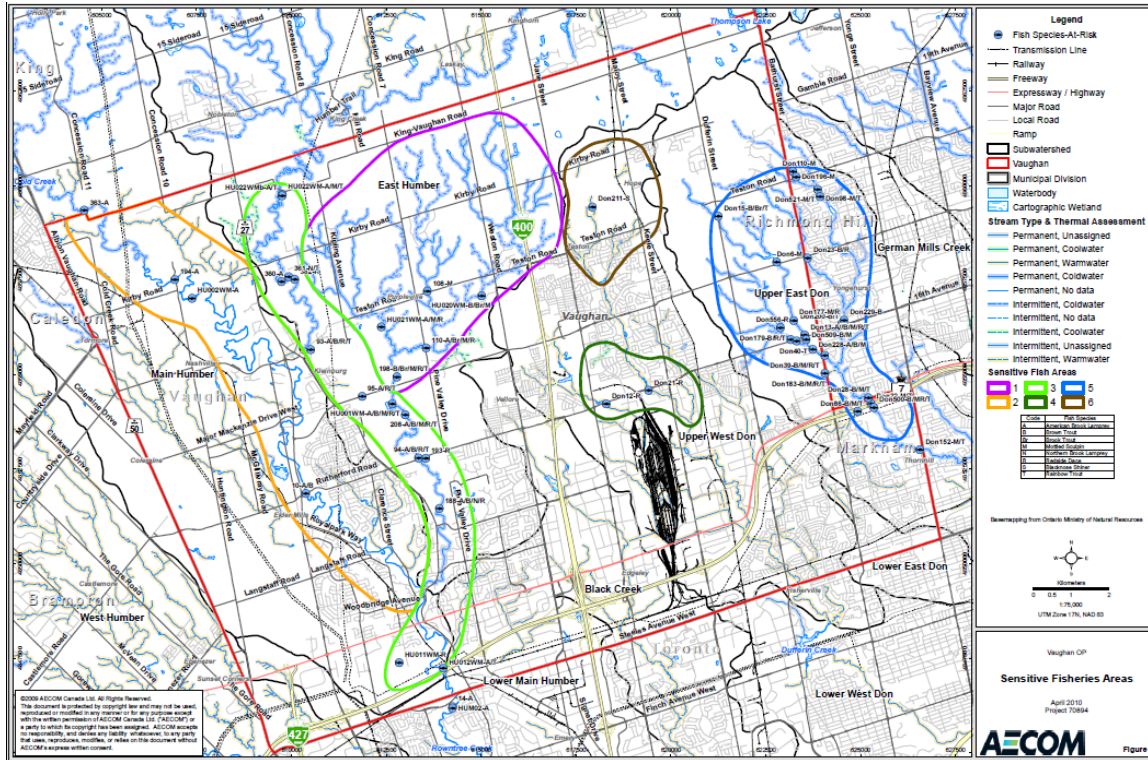
LEARNING FROM OTHER NATURAL HERITAGE SYSTEM DESIGNS

- A systems-based approach to ecological stewardship is consistent with current best practices
- Decisions must attempt to achieve an appropriate balance between economic, social and ecological considerations
- Corridor enhancement is a priority
- A fair process is one based on clear criteria and a transparent process

ECOSYSTEM TARGETS



HEADWATERS EVALUATION

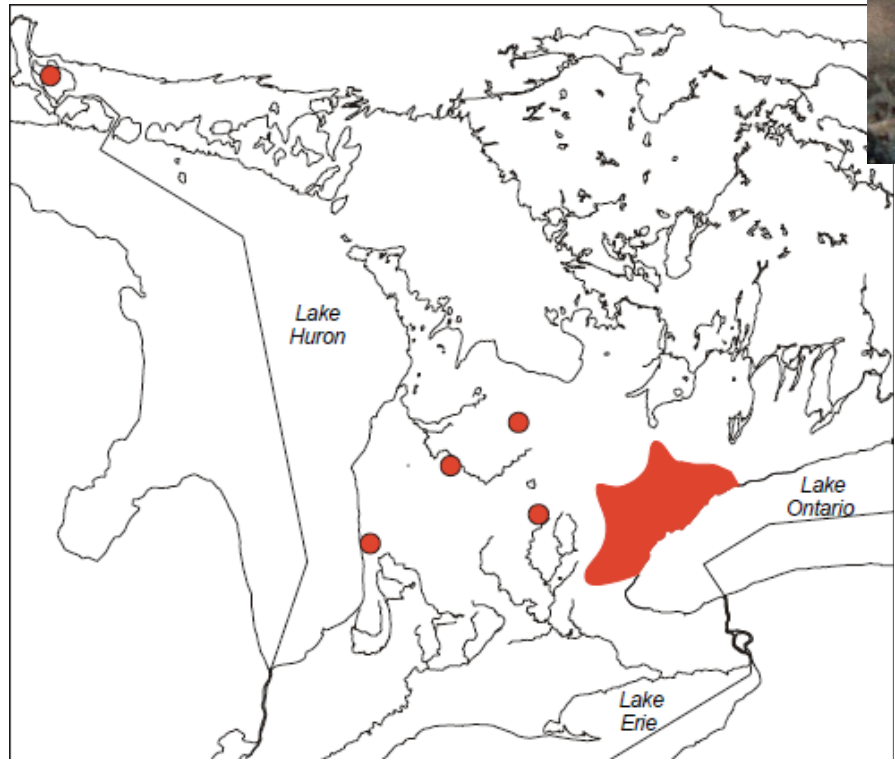


wetland storage with groundwater discharge, not easily replicated



roadside ditch supporting brook trout, artesian flow

HEADWATERS EVALUATION



Endangered Redside Dace



SIGNIFICANT WILDLIFE HABITAT



Habitats of seasonal concentrations of animals

Rare vegetation communities or specialized habitat

Habitat of species of conservation concern

Animal movement corridors

NEXT STEPS

- Summer efforts to define GIS database attributes and ecosystem targets
- Draft findings and recommendations to Public Consultation Meeting #2 in September
- Report to Committee of the Whole in November 2012
- Continued public consultation in Phases 2, 3 and 4 (adaptive management approach)
- Opportunity for residents/landowners to provide site-specific information in Phase 1 and later in Phases 2, 3 and 4.



Questions /Comments?

Contact

Tony Iacobelli

Senior Environmental Planner

905-832-8585 ext. 8630

tony.iacobelli@vaughan.ca