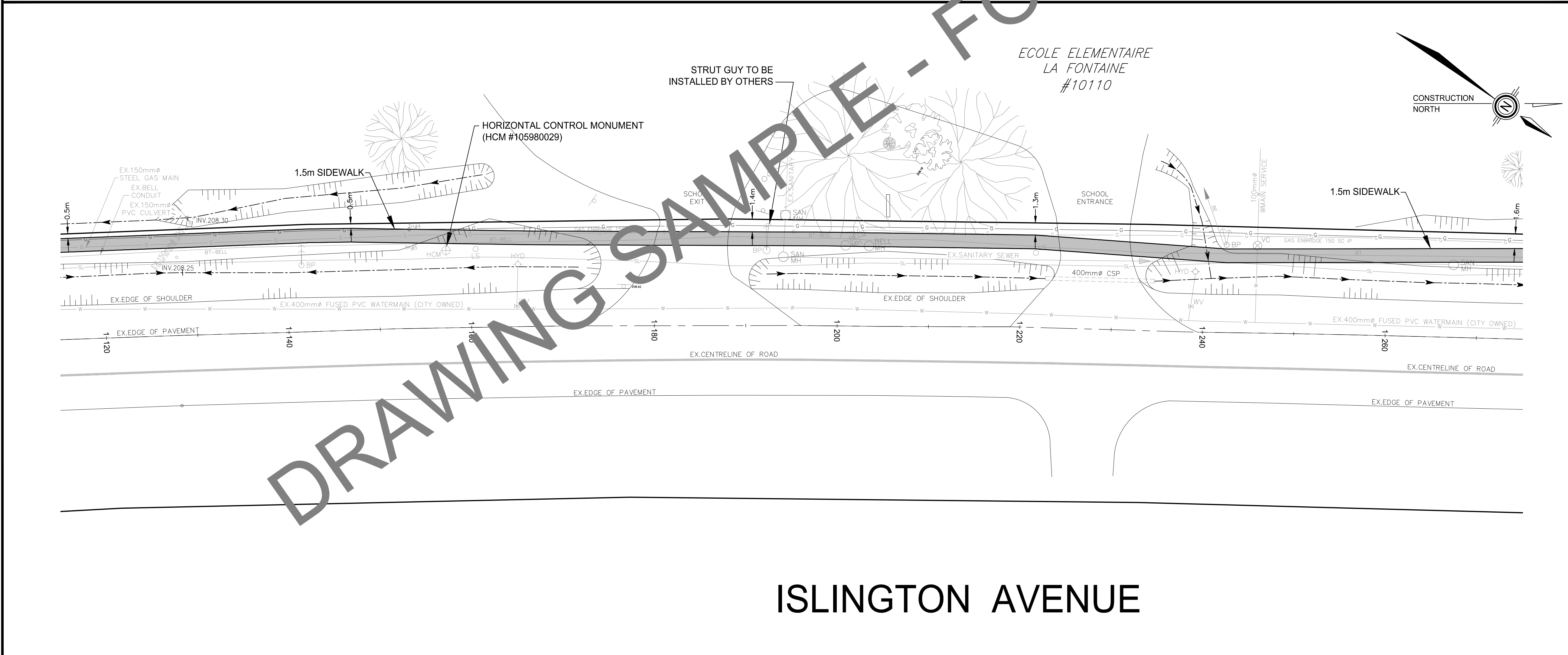
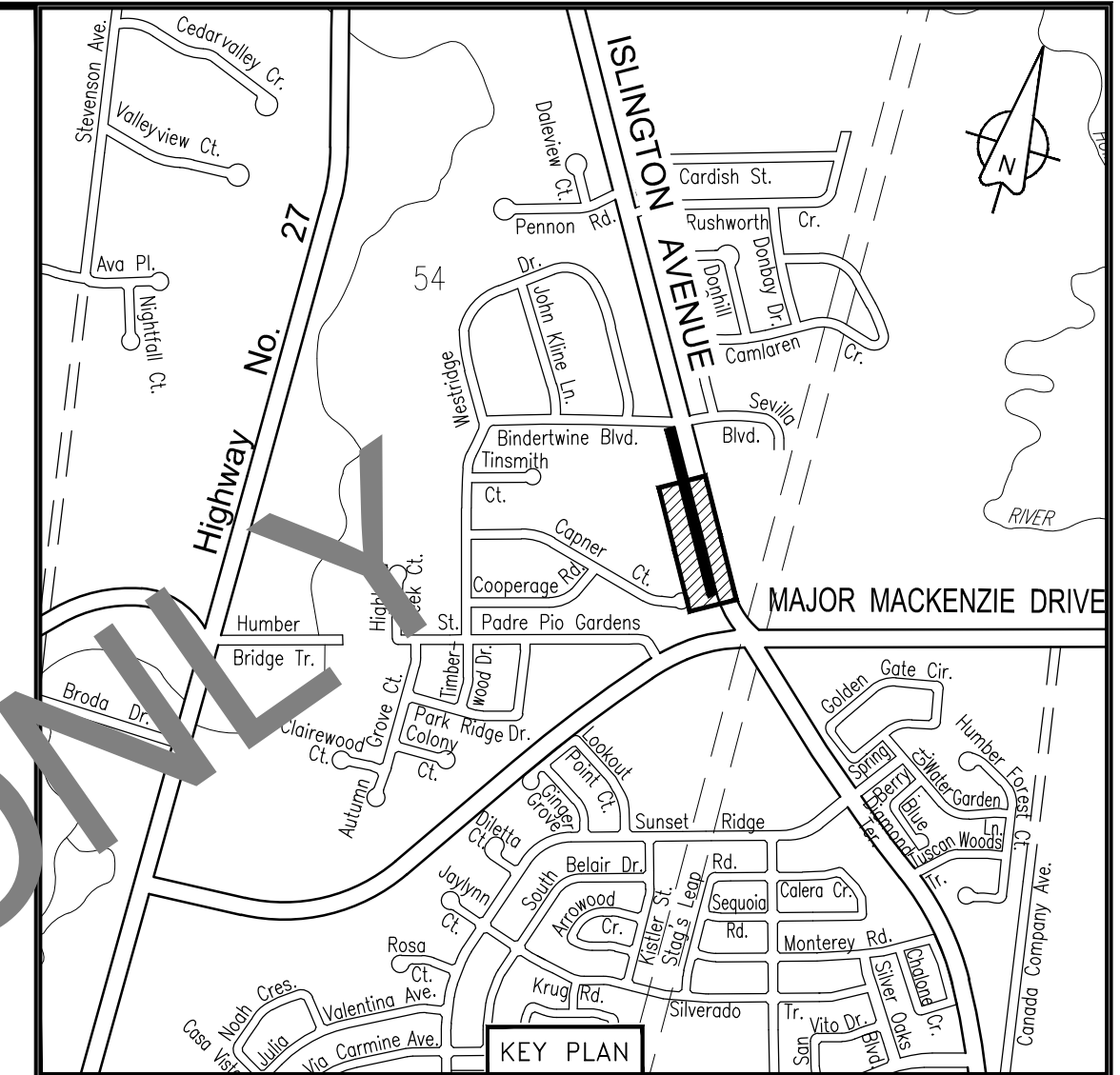


ISLINGTON AVENUE



ISLINGTON AVENUE



- CONTRACTOR'S NOTES:**
1. ALL DIMENSIONS ARE IN METRES AND / OR MILLIMETRES UNLESS OTHERWISE INDICATED.
 2. DRAWINGS ARE NOT TO BE SCALED.
 3. THE CONTRACTOR SHALL VERIFY ALL DIMENSIONS IN THE FIELD AND SHALL REPORT ANY DISCREPANCIES TO THE ENGINEER IMMEDIATELY UPON FINDING.
 4. THE EXACT LOCATION OF UTILITIES SHALL BE DETERMINED BY CONSULTING THE UTILITY COMPANIES CONCERNED. THE CONTRACTOR SHALL PROVE THE LOCATION OF UTILITIES AND SHALL BE RESPONSIBLE FOR ADEQUATE PROTECTION FROM DAMAGE.
 5. BENCHMARKS FOR LAYOUT ARE TO BE OBTAINED FROM THE CITY OF VAUGHAN ENGINEERING DEPARTMENT.

NOTE:
 EVERY REASONABLE EFFORT HAS BEEN MADE TO ENSURE THAT THE INFORMATION APPEARING ON THIS PLAN IS ACCURATE AND CURRENT. WE BELIEVE THE INFORMATION TO BE RELIABLE, HOWEVER, THE CITY OF VAUGHAN ASSUMES NO RESPONSIBILITY OR LIABILITY DUE TO ERRORS OR OMISSIONS.

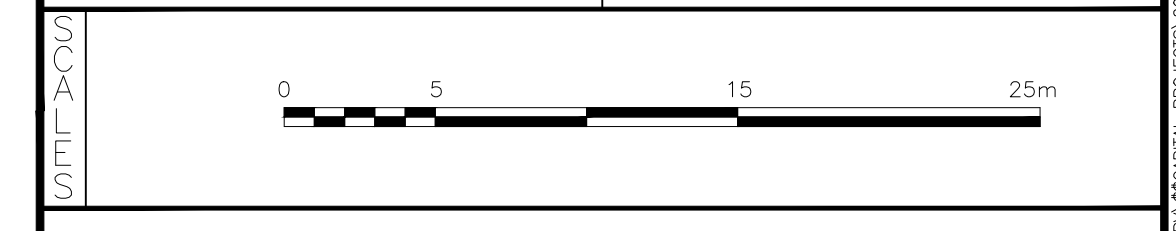
HCM No. 105980029
 ELEVATIONS ARE RELATED TO CITY OF VAUGHAN HORIZONTAL / VERTICAL MARKER #105980029
 NAD 83 (UTM 6 DEG-ZONE 17)
 ELEVATION: 205.581 (78-ADJ)

12			
11			
10			
9			
8			
7			
6			
5			
4	ASBUILT	K.M.	OCT.07.2015
3	REVISED SIDEWALK DESIGN AT CAPTNER COURT	C.C.	MAY.14.2015
2	ISSUED FOR CONSTRUCTION	C.C.	MAY.05.2015
1	ISSUED FOR TENDER	C.C.	MARCH 2015
NO.	DESCRIPTION	BY	DATE

UPDATES & REVISIONS

ENGINEER'S STAMP: [Blank]

APPROVED BY:
 JACK GRAZIOSI, P.Eng., M.Eng.
 DIRECTOR OF CAPITAL DELIVERY AND ASSET MANAGEMENT
 DATE: _____



ISLINGTON AVENUE SIDEWALK
 1+000 to 1+275



DESIGNED BY: C.C.	DATE: MARCH 2014	CHECKED BY: F.F.
DRAWN BY: M.E.O.	SURVEYED BY: G.S./E.L.	APPROVED BY: F.F.
SCALE: 1:250	PROJ. No. Q15-224	DWG. No. 1 of 2

DRAWING SAMPLE - FOR REFERENCE ONLY