



Yonge Steeles Landowners Group – Parks Vision

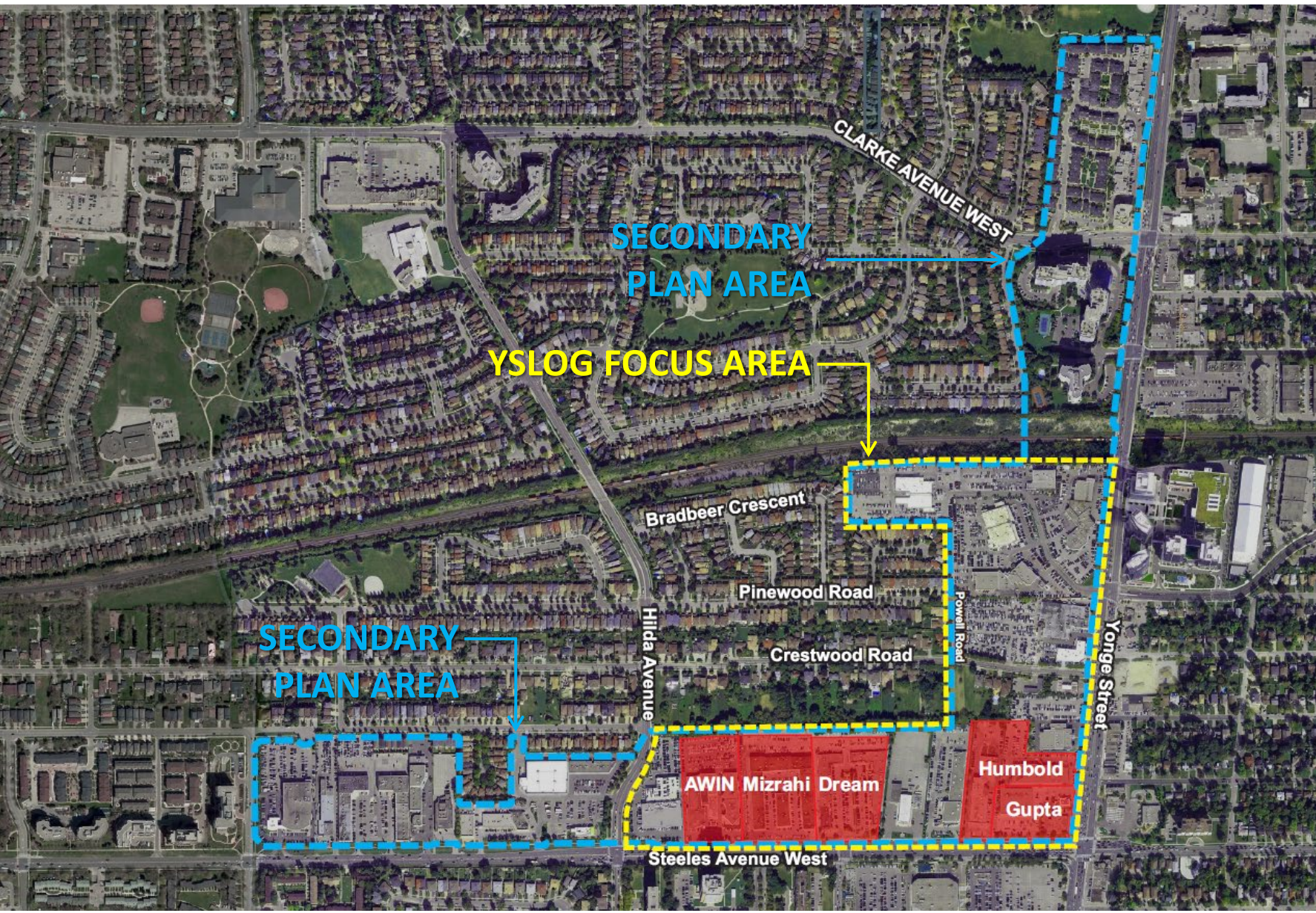
Thursday April 29, 2021

YSLOG Vision

New Community focused on a comprehensive parks and road network with integrated community facilities.

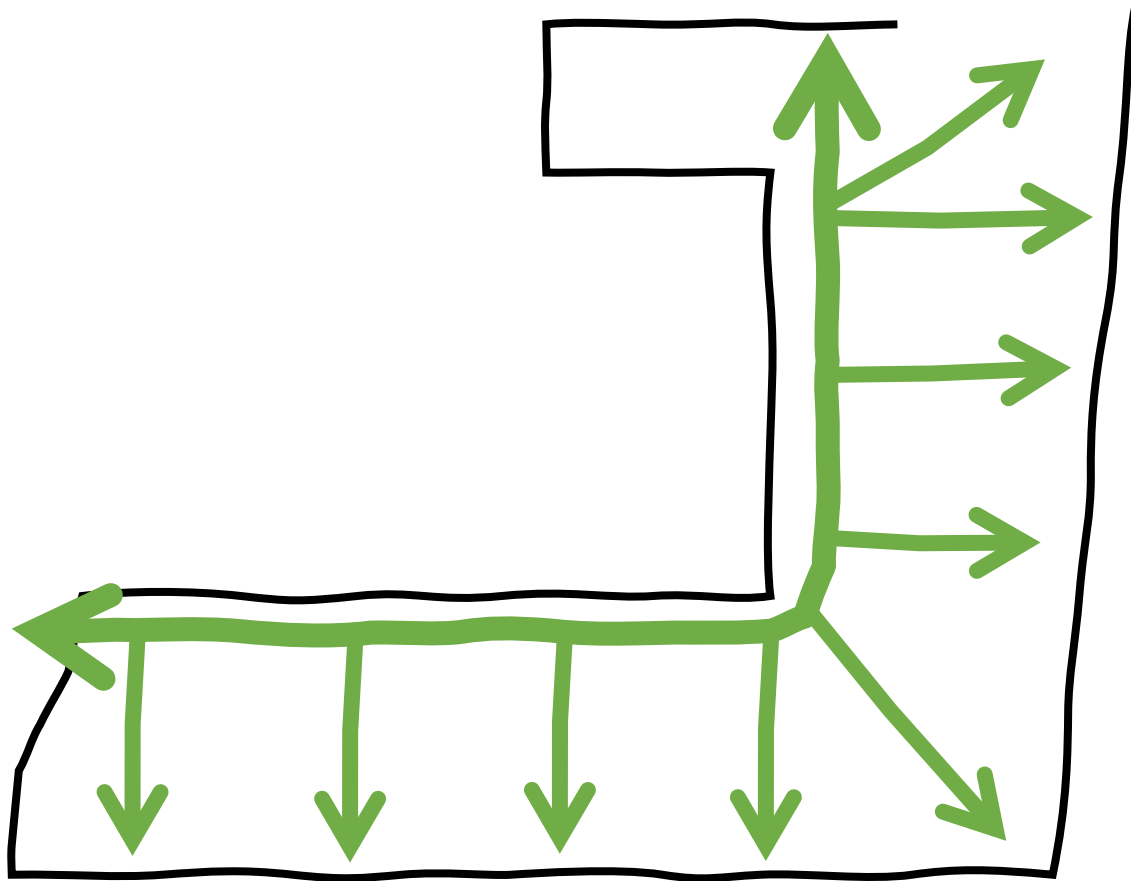
- ✓ Gateway site into the City and Region;
- ✓ Landmark community asset for new and existing residents;
- ✓ High quality public realm;
- ✓ Facilities to support equity and accessibility for a diverse population; and
- ✓ Active and vibrant clusters of public amenities.

YSLOG Vision



YSLOG
Ownership Map
April 2021

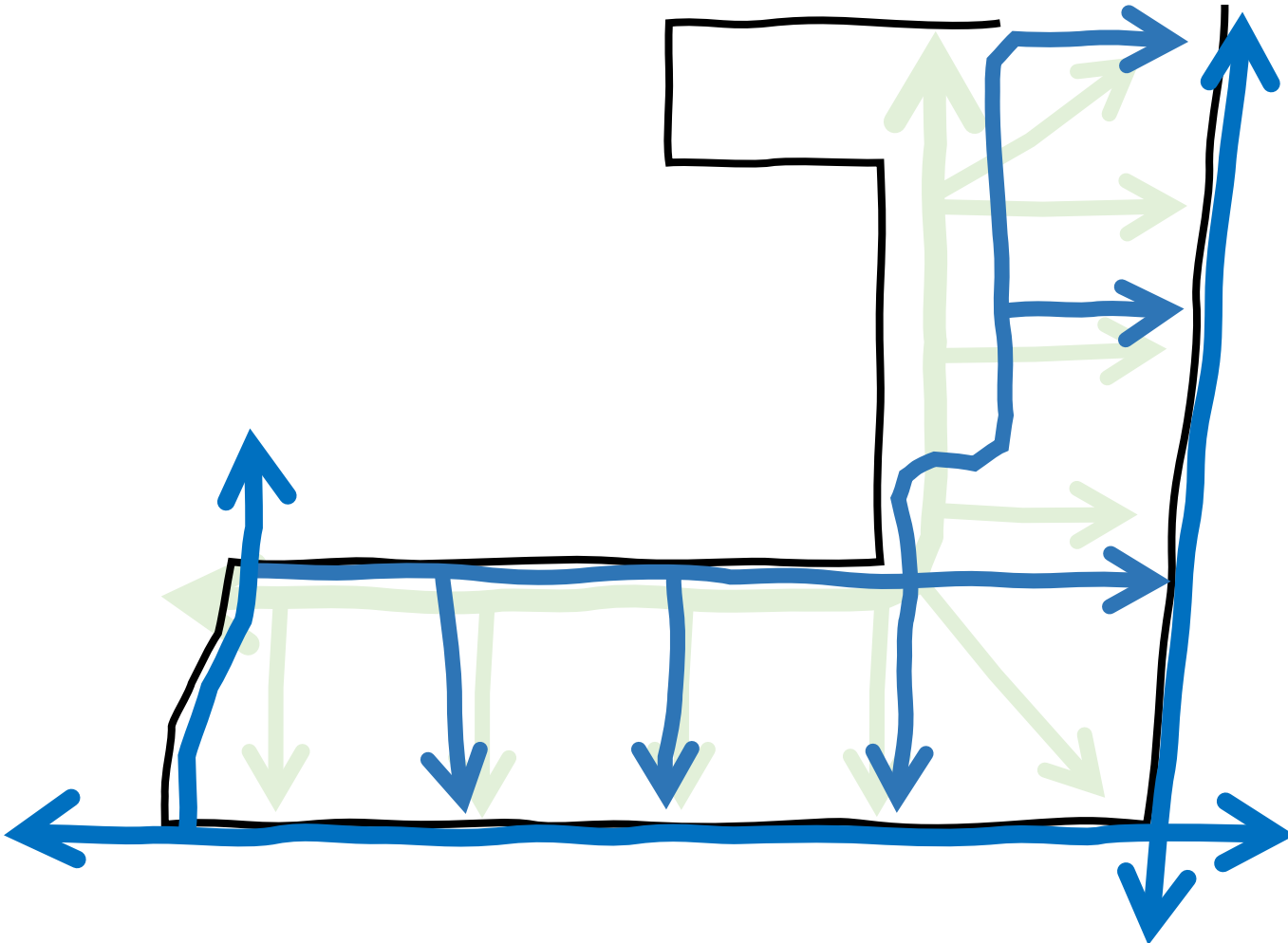
YSLOG Vision



Linear Park System

- Linear Park System is the focus of the community and provides a transition zone between the new growth and the existing community;
- Park network based on connected series of traditional, stratified, and POPS spaces;
- Park System to provide equal distribution of recreational opportunities, within a 500m walk from every home; and
- Phasing of parks with new development to ensure park is provided over life cycle of secondary plan.

YSLOG Vision

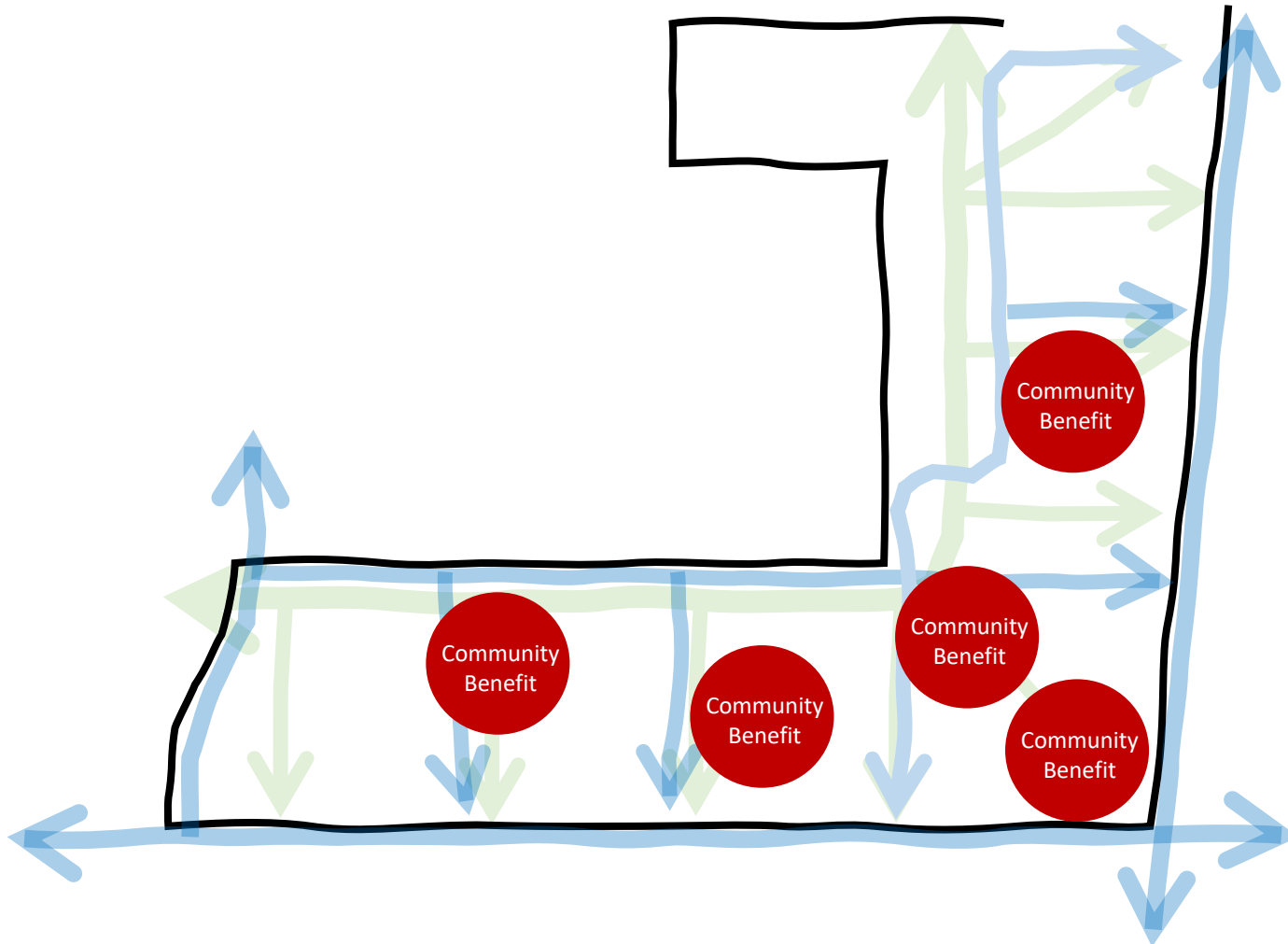


Street Network

- Street network supports access and visibility to the new community while enhancing permeability through the site;
- Street network responds to the urban context, providing walkable blocks and connections to the larger network; and
- Streets are located to coordinate with the individual development sites and support the distribution of meaningful park spaces.

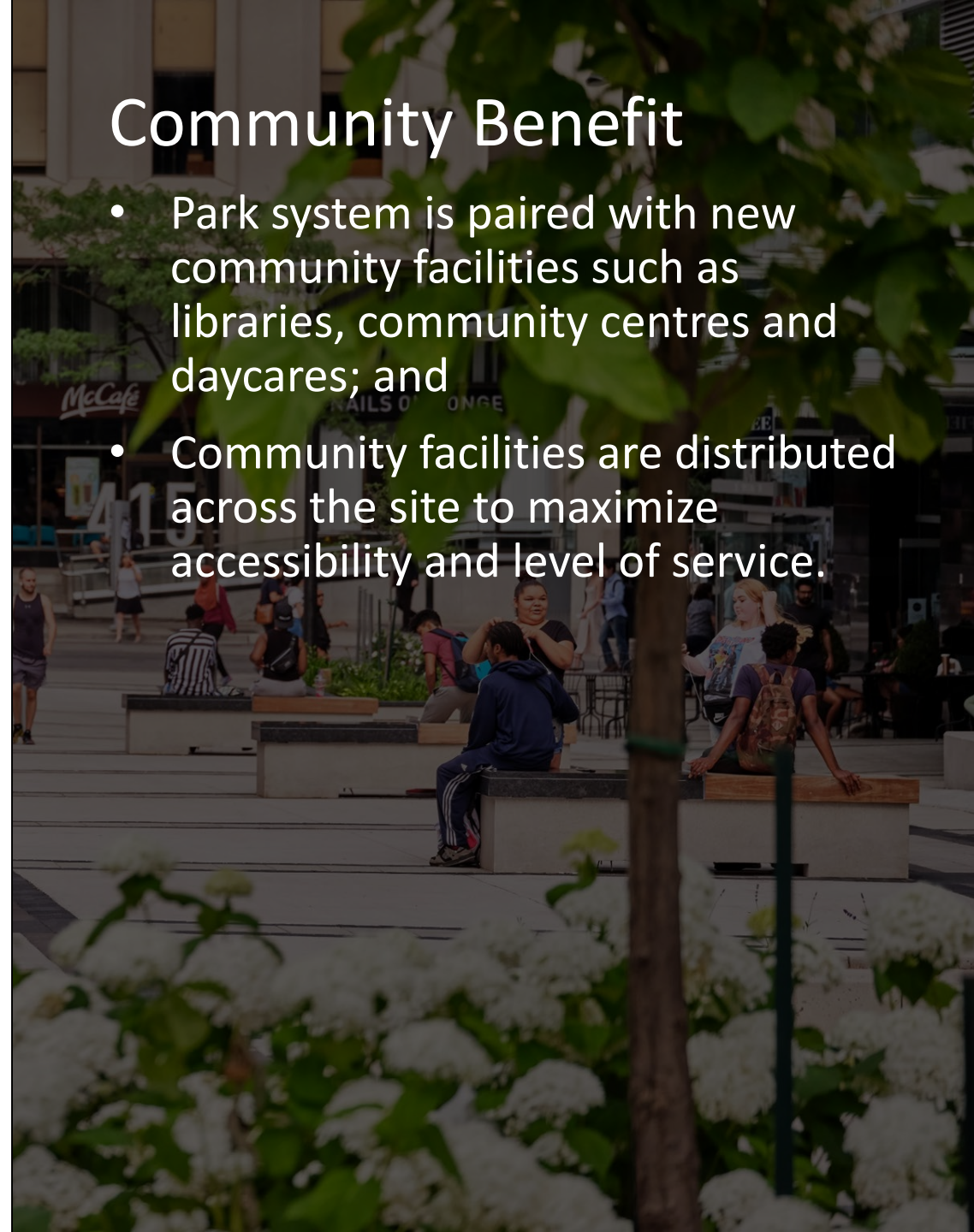


YSLOG Vision

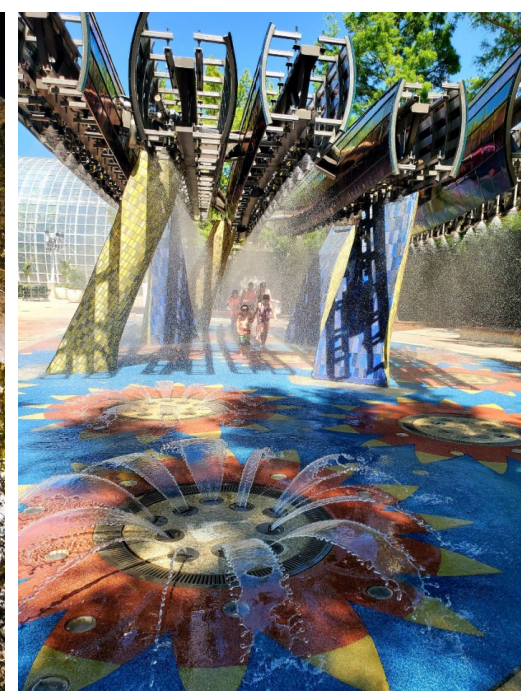
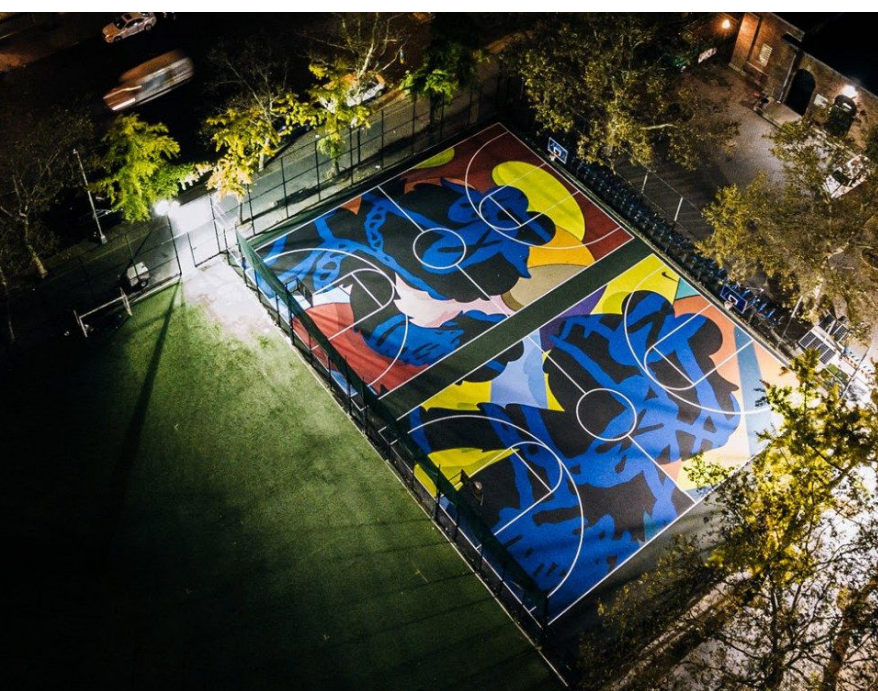


Community Benefit

- Park system is paired with new community facilities such as libraries, community centres and daycares; and
- Community facilities are distributed across the site to maximize accessibility and level of service.



Parkland Principles



All Seasons & Diversity

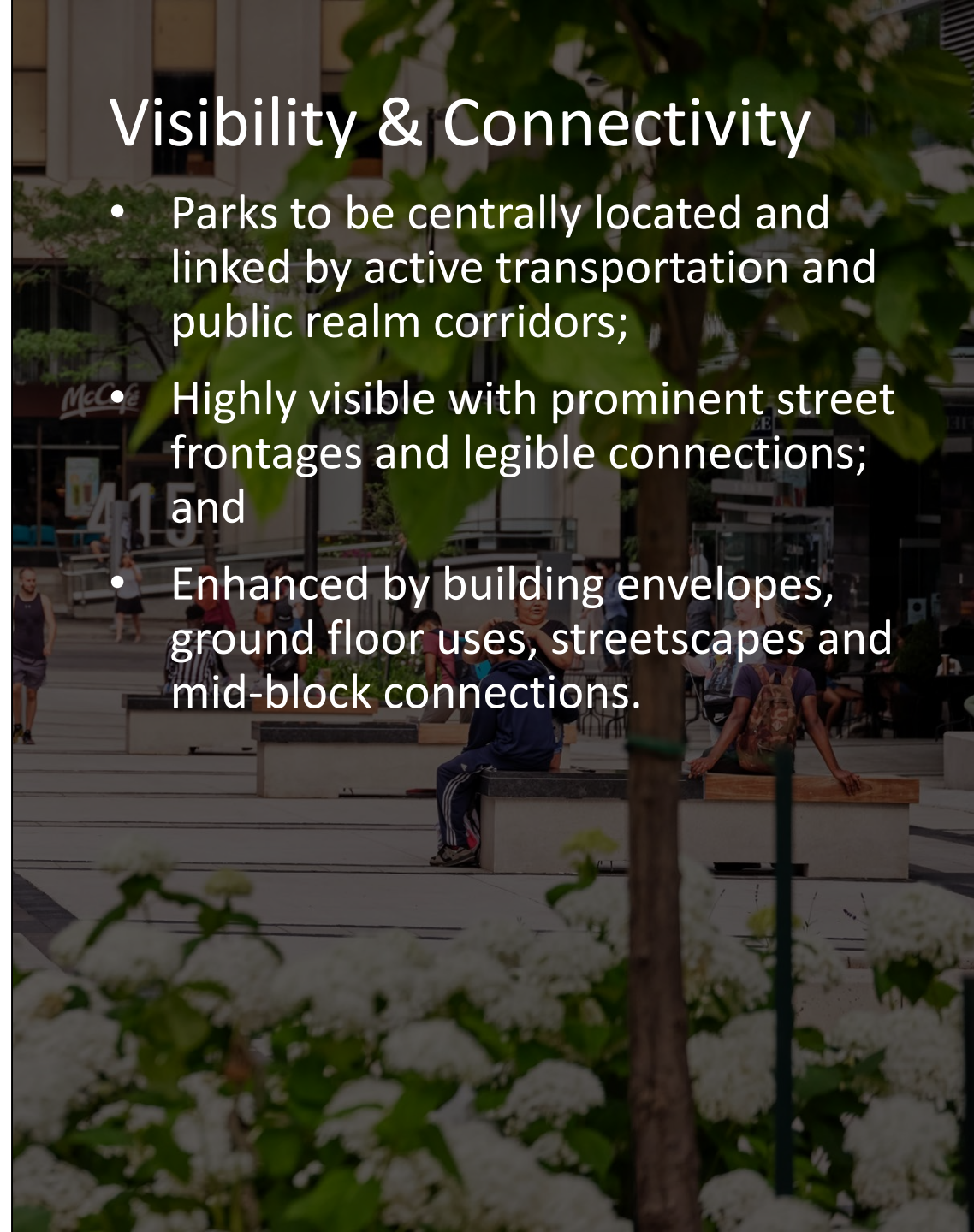
- Combination of active, passive, flexible and programmable spaces to accommodate events and daily activities of residents;
- Design for year round use with thoughtful combination of amenities to encourage multi-season recreation;
- Provide amenities to promote multi-generational play and cultural diversity, and
- Prioritize creating space for healthy tree canopy and gardens.

Parkland Principles



Visibility & Connectivity

- Parks to be centrally located and linked by active transportation and public realm corridors;
- Highly visible with prominent street frontages and legible connections; and
- Enhanced by building envelopes, ground floor uses, streetscapes and mid-block connections.



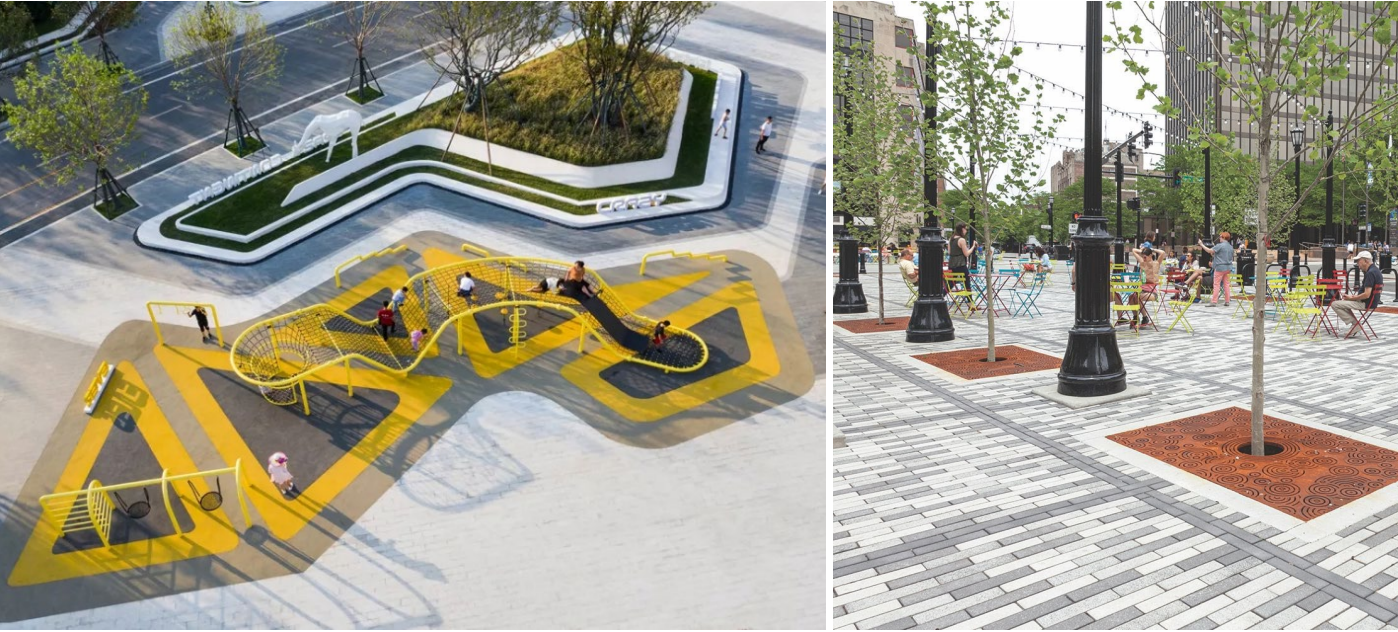
Parkland Principles



Urban Context

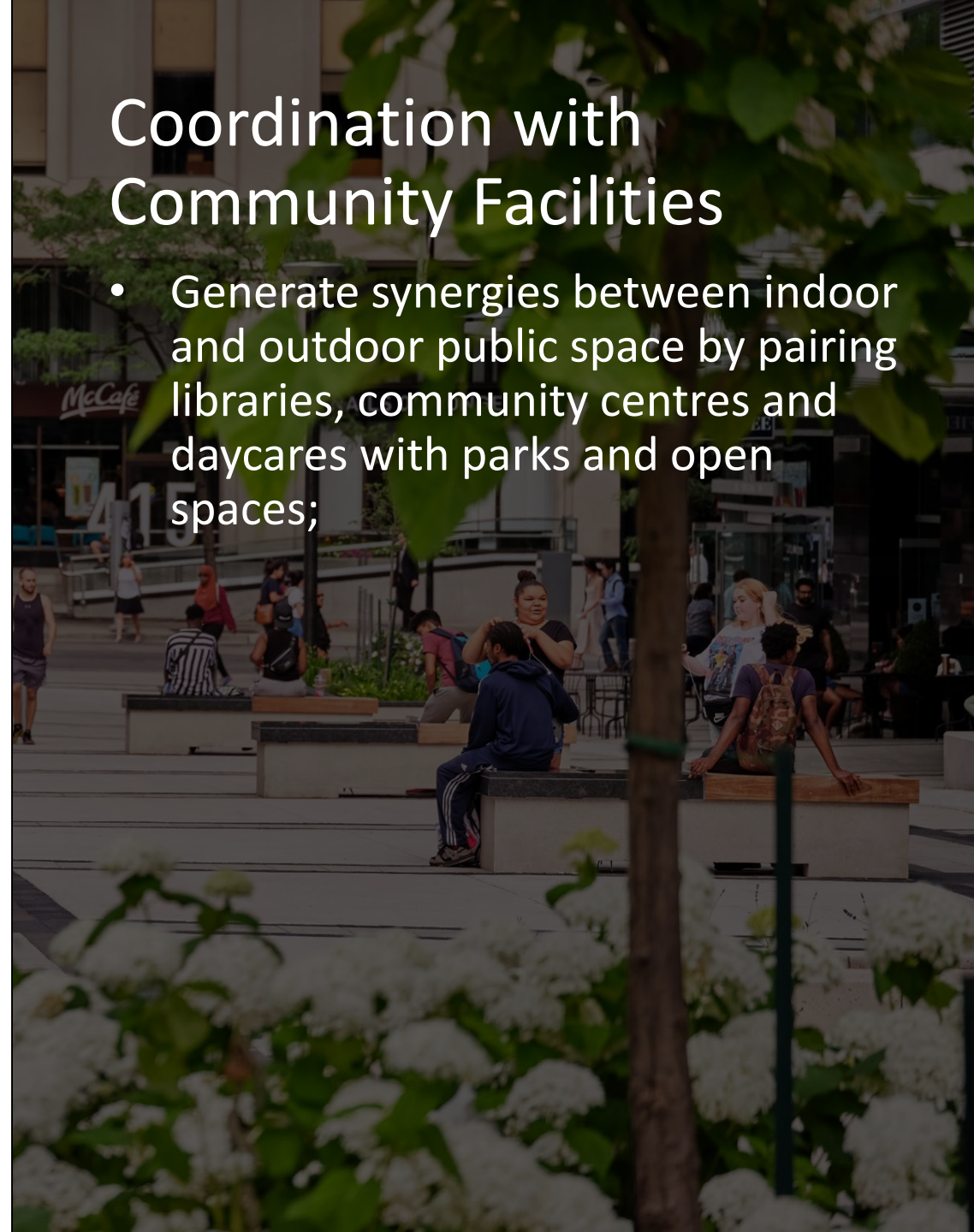
- Respond to urban context by providing compact, vibrant and diverse amenities that serve multiple functions;
- Maximize amenity variety to enrich the recreation narrative and provide appealing choices; and
- Take advantage of alternative park delivery formats such as POPs and strata parks which enrich the overall parks and open space network.

Parkland Principles



Coordination with Community Facilities

- Generate synergies between indoor and outdoor public space by pairing libraries, community centres and daycares with parks and open spaces;



YSLOG Proposed Development Renderings



YSLOG Proposed Development Renderings



YSLOG Proposed Development Renderings

