

Disruption Alert

Work at North Maple Regional Park is progressing!

The City of Vaughan continues to make progress on construction at North Maple Regional Park (11067 Keele St.). Current work includes:

- construction of a new ring road – a circular road intended to take you around the park – which will include a six-metre-wide multi-use pathway.
- intersection improvements at Keele Street and the existing north entrance of the park, including new traffic control signals and a dedicated turn lane.
- a new right-in/right-out road connection at the south entrance of the park to Keele Street.

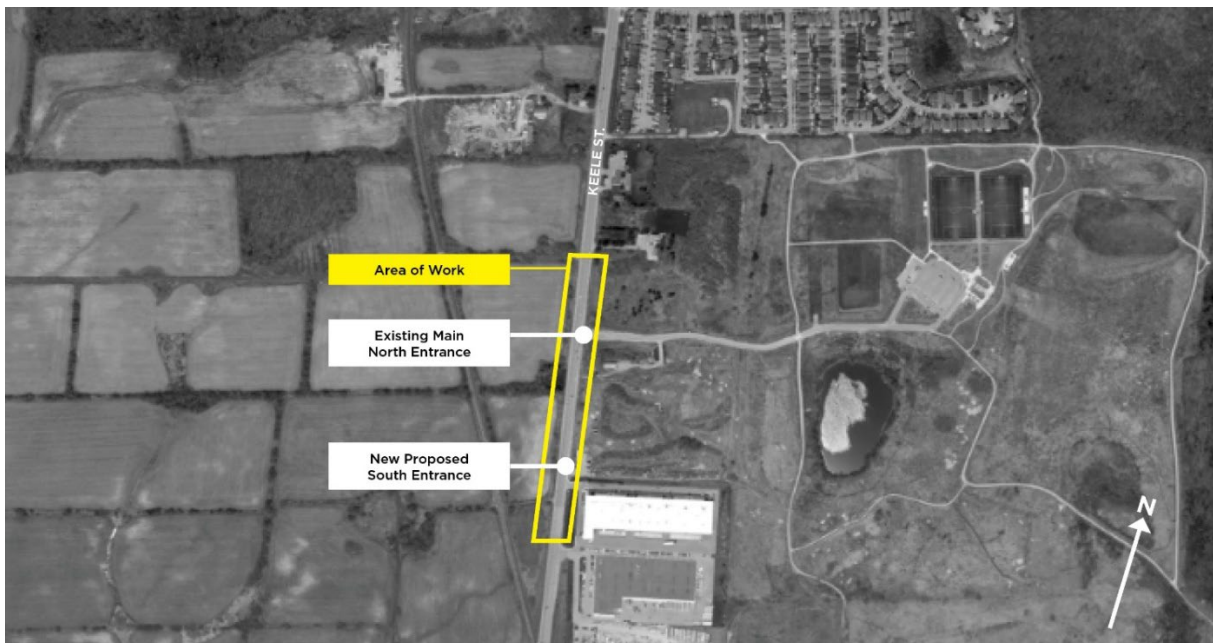
These improvements are anticipated to be completed by summer 2024.

A new sanitary sewer is also being installed to service the park, which will connect to the existing sanitary main on Keele Street. This work is expected to be completed by the end of March 2024.

To safely complete all construction activities, intermittent lane reductions along Keele Street will be required on weekdays from 9:30 a.m. to 3:30 p.m. Signage and safety barriers are in place to guide travellers.

Safety first! We ask that all park visitors exercise caution and respect on-site signage, barriers and other traffic control measures in place. For your safety, please stay out of these designated construction areas and stay clear of equipment and machinery.

Check vaughan.ca/NMRP regularly for project updates and more information.



Questions? Please contact Service Vaughan at 905-832-2281. After hours, please call the dispatch office at 905-832-2281 and press 0.