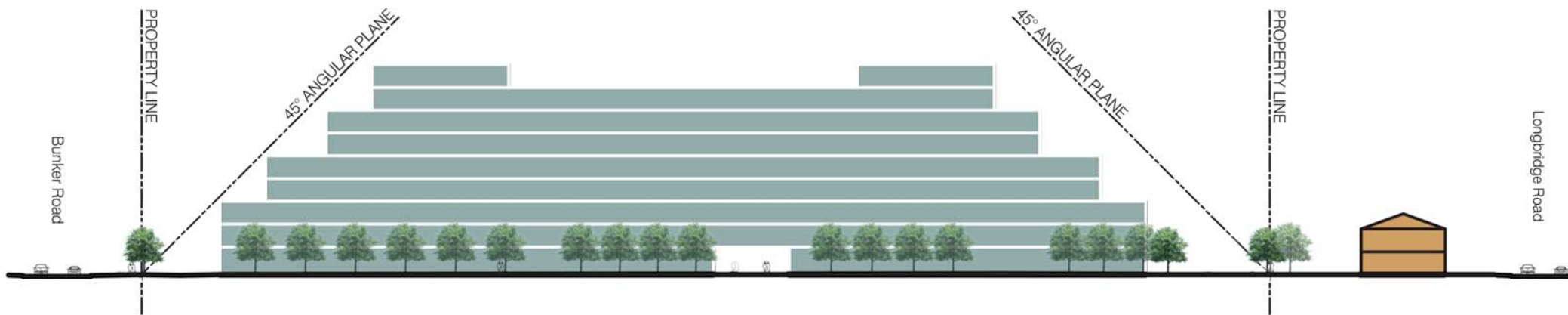


SECTION A-A

ANGULAR PLANE

Angular planes play an important role in shaping the built environment in terms of scale, height, spacing, and character. The primary intent of angular planes is to form respectful transitions.

Transitions in the urban environment might take the form of gradual change in scale, height, mass or use. Transitions ensure that development does not overwhelm or negatively affect neighbouring land uses.



SECTION B-B

DORIAN PLACE DEMONSTRATION SITE
SECTIONS
OCTOBER 2011

