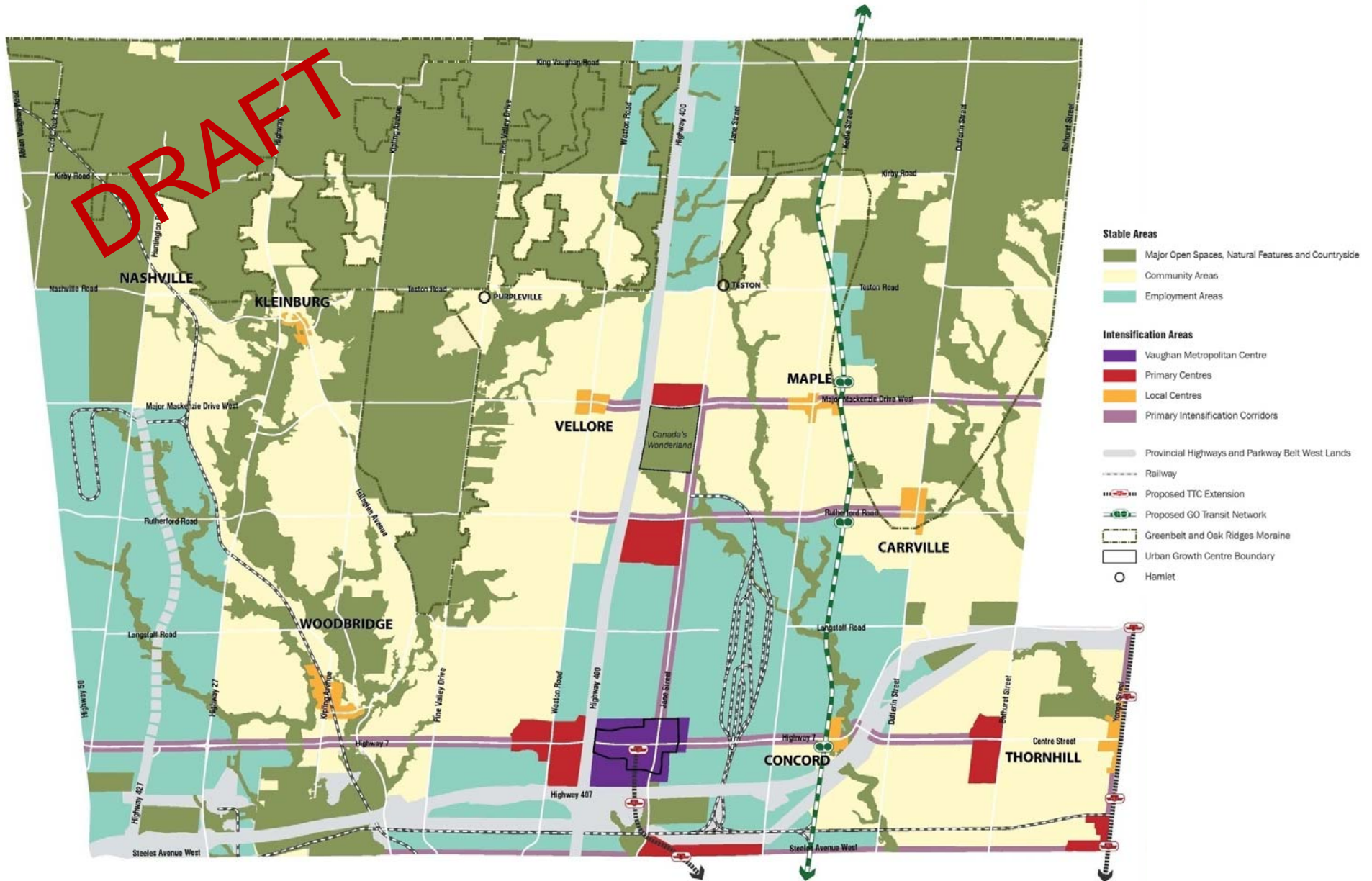
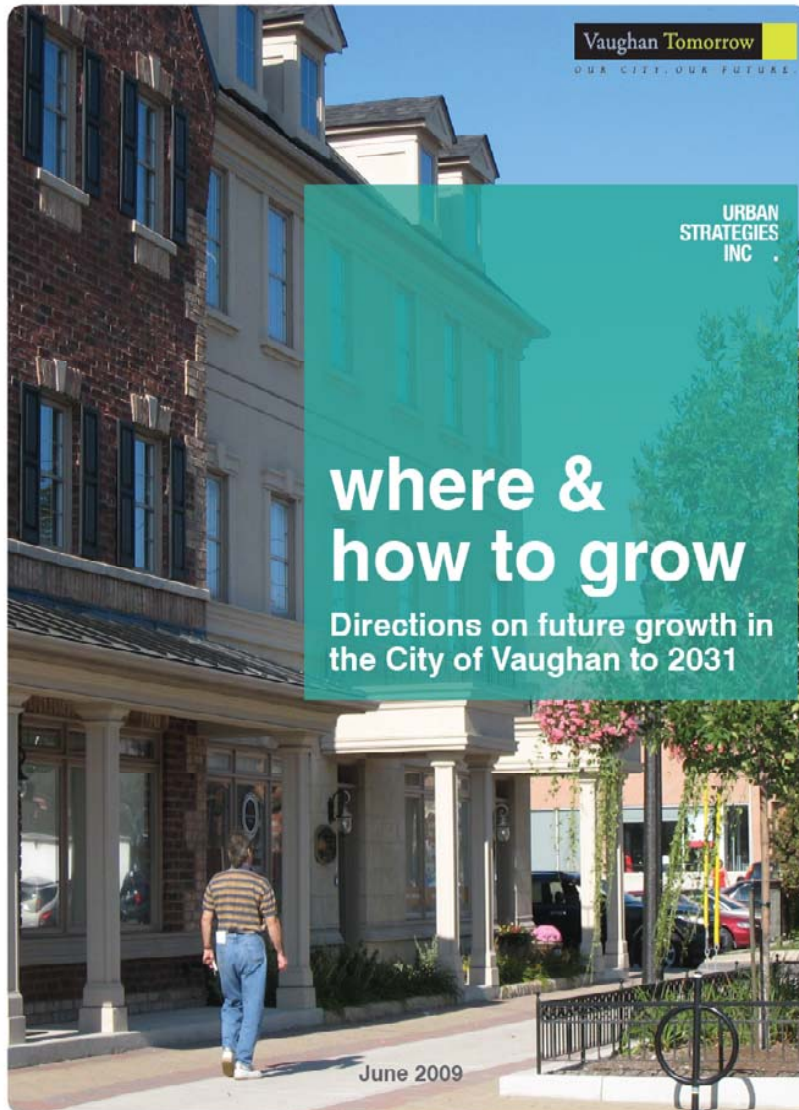


The city's future centre



...with enormous potential for growth



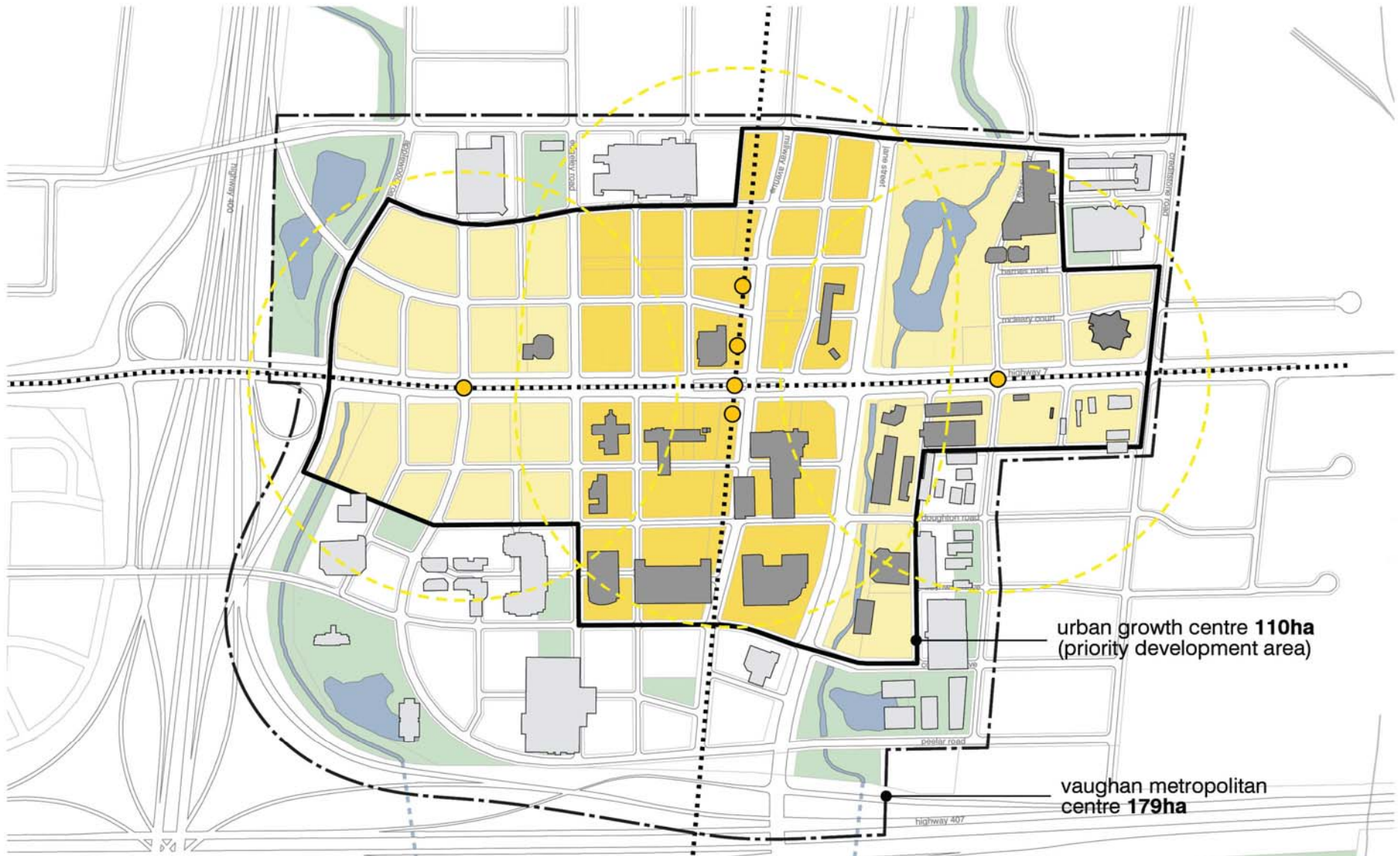
Population and Employment Targets for the VMC to 2031:

12,000 units

25,000 residents

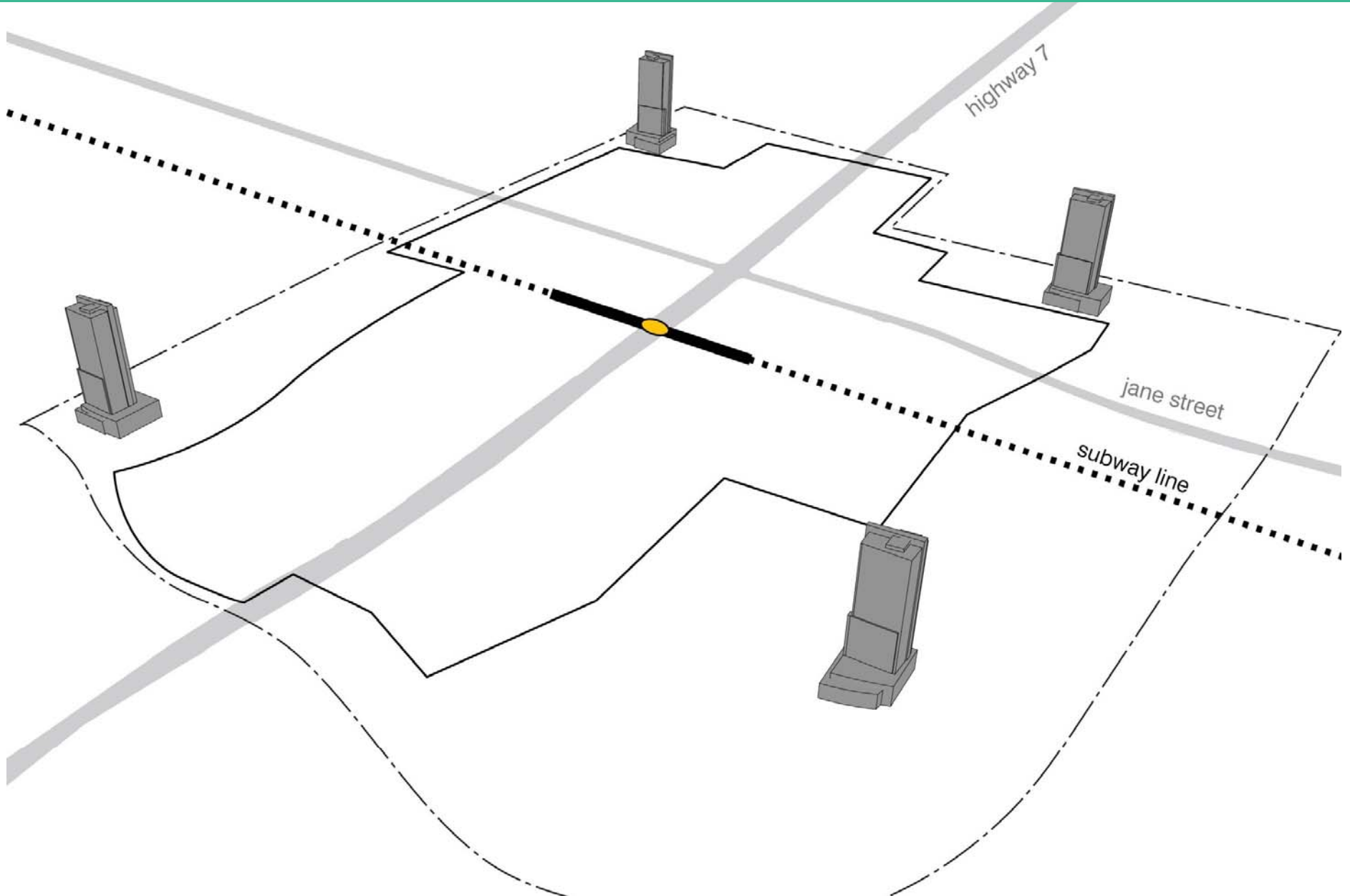
6,500 new jobs
(Total 11,500)

To create a downtown, growth needs to be focused.

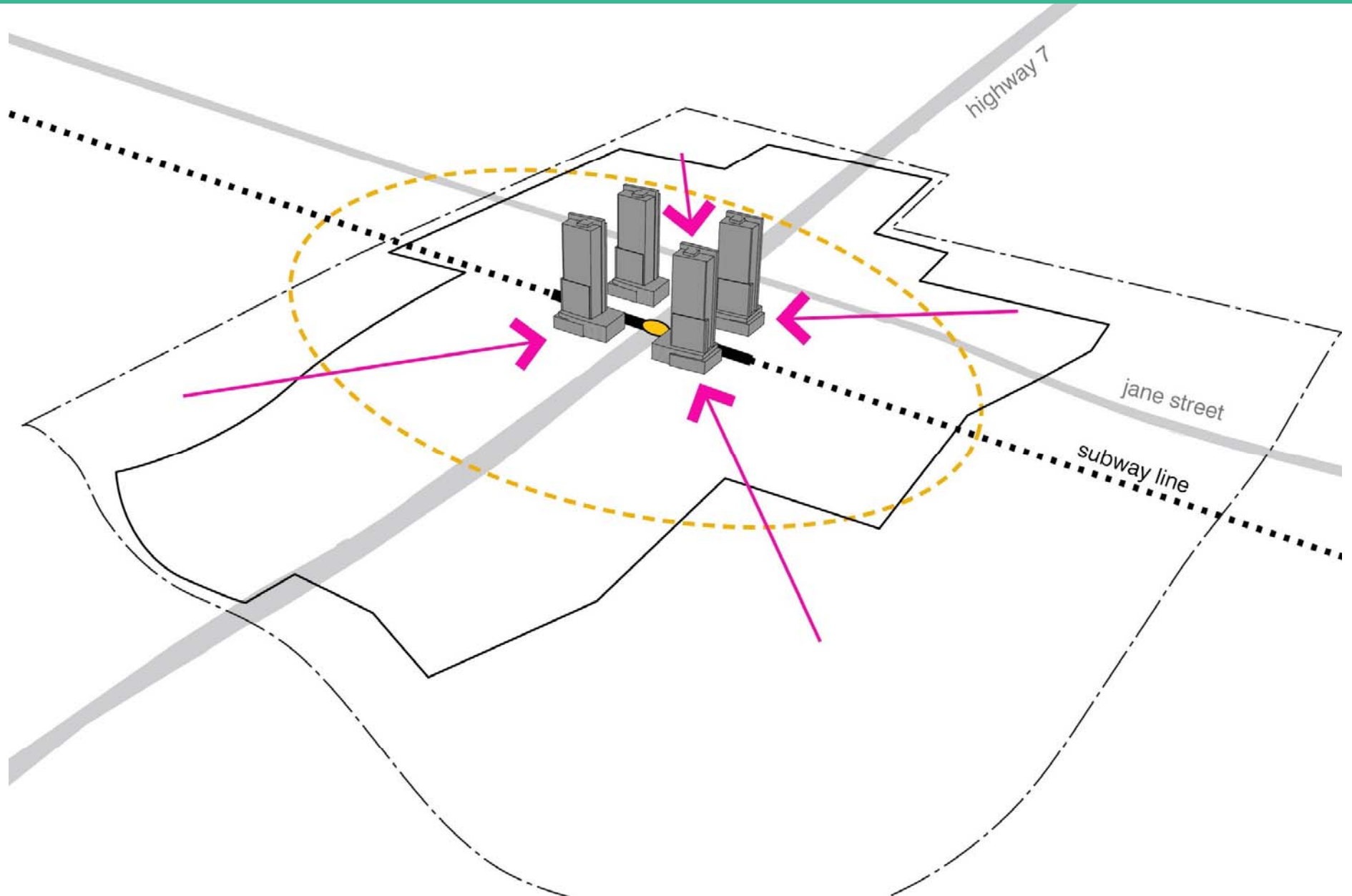


DRAFT

To create a downtown, growth needs to be focused.



To create a downtown, growth needs to be focused.



To create a downtown, growth needs to be focused.

