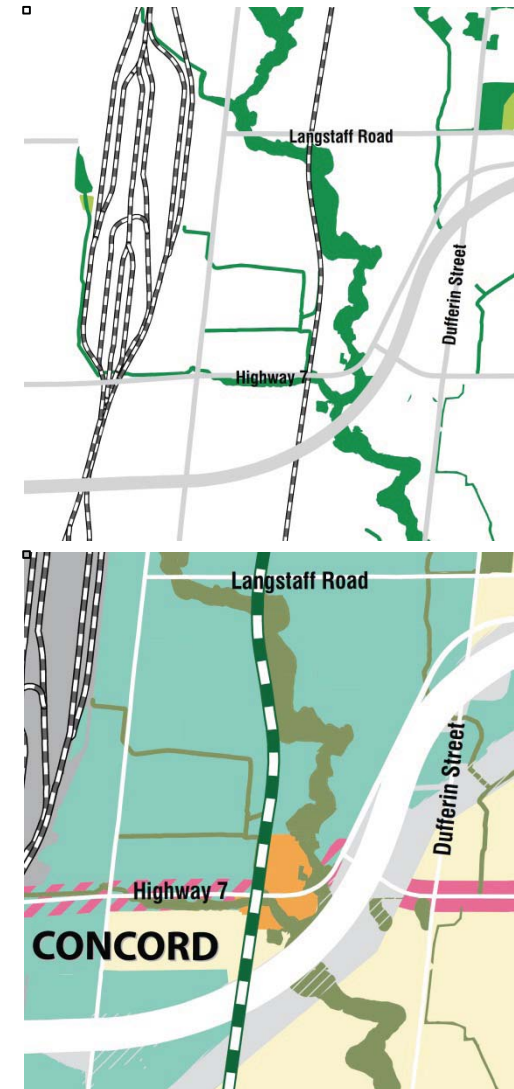


BACKGROUND Natural Heritage

3

Background Review – Natural Heritage

- York Region OP - riparian corridor part of *Regional Greenlands System* but not *Greenlands System Vision*
- The Vaughan OP designates the riparian corridor & a portion of the treed area in the south end as *Core Features* within the *Natural Heritage System*
- Significance of woodlands are to be evaluated based on Vaughan OPA's
- Portions of study area within TRCA Natural Heritage System (riparian corridor)
- Don River Watershed Plan ranks the ecological quality of the Watershed and Subwatershed as L4-Poor



3

Background Review – Natural Heritage

- NHIC query highlighted 2 Species At Risk records in the area: American Gromwell (*Lithospermum latifolium*) & Scarlet Beebalm (*Monarda didyma*)
- Natural Heritage studies completed for the 407 Transitway EA and for the development application for the northern parcel in 2007 by Beacon
- Beacon study findings include primarily cultural features and considered the valley features an important corridor that allows for year-round movement of urban tolerant wildlife species as well as many migrant birds in spring and fall. Identified one species at risk (Butternut).



3

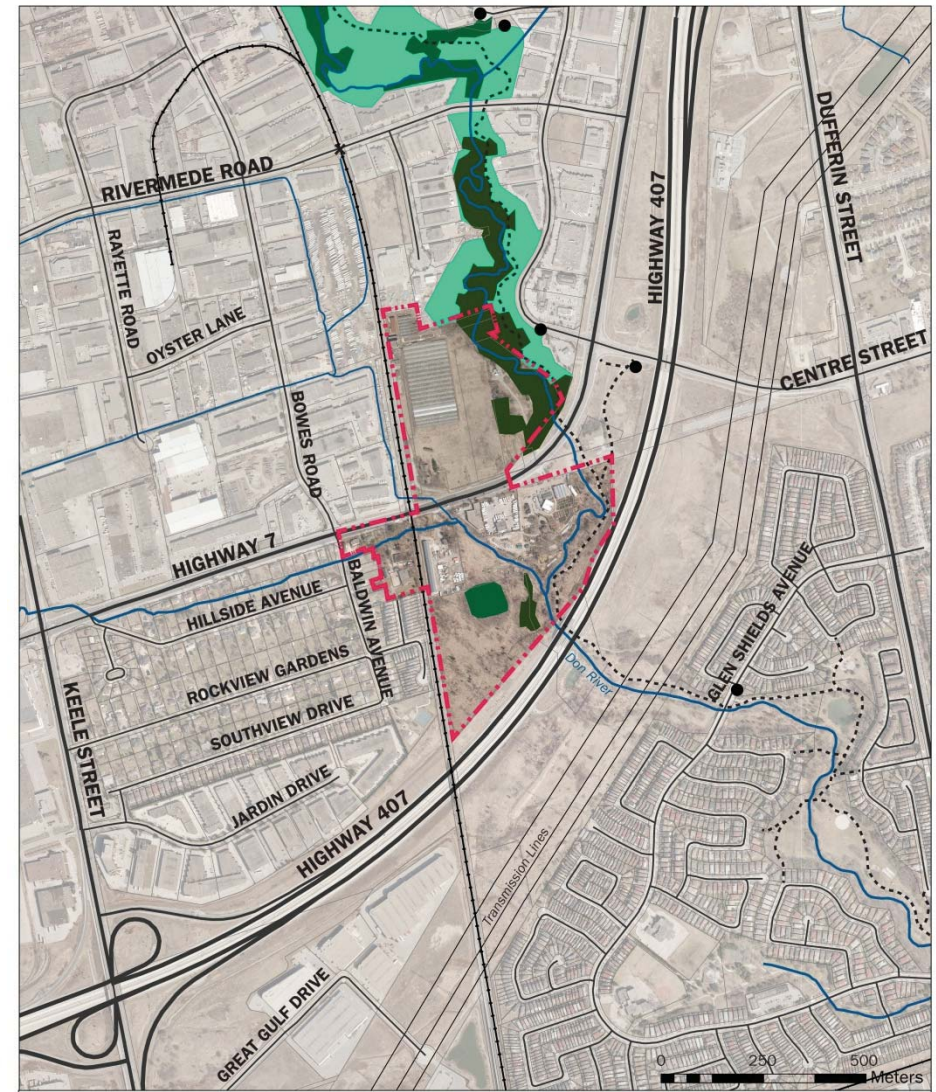
Background Review – Natural Heritage

- Concord West Residents Ad Hoc Committee (AHC) members tentatively identify a Blanding's Turtle, a 'Species at Risk' designated "Threatened" in September 2010
- Representative from Toronto Zoo visited the area in October 2010 with AHC and concluded:
 - "the property itself does not contain excellent Blanding's Turtle habitat"
 - "it could be an important corridor between suitable habitat to the north and south."
 - Keffer Marsh approximately 1 km to the north "contains suitable summer, nesting, and winter habitat for Blanding's turtles"
 - such corridors are important for "landscape turtles" like the Blanding's Turtle, especially in environments where suitable wetland habitats are dwindling.

3

Background Review – Natural Heritage

- Dougan completed a fall vegetation survey
- Results are still being processed but preliminary findings include:
 - Vegetation communities are all ‘cultural’ indicating young age and pervasive disturbance
 - Species are dominated by invasive exotics
 - Butternut discovered in the valleylands

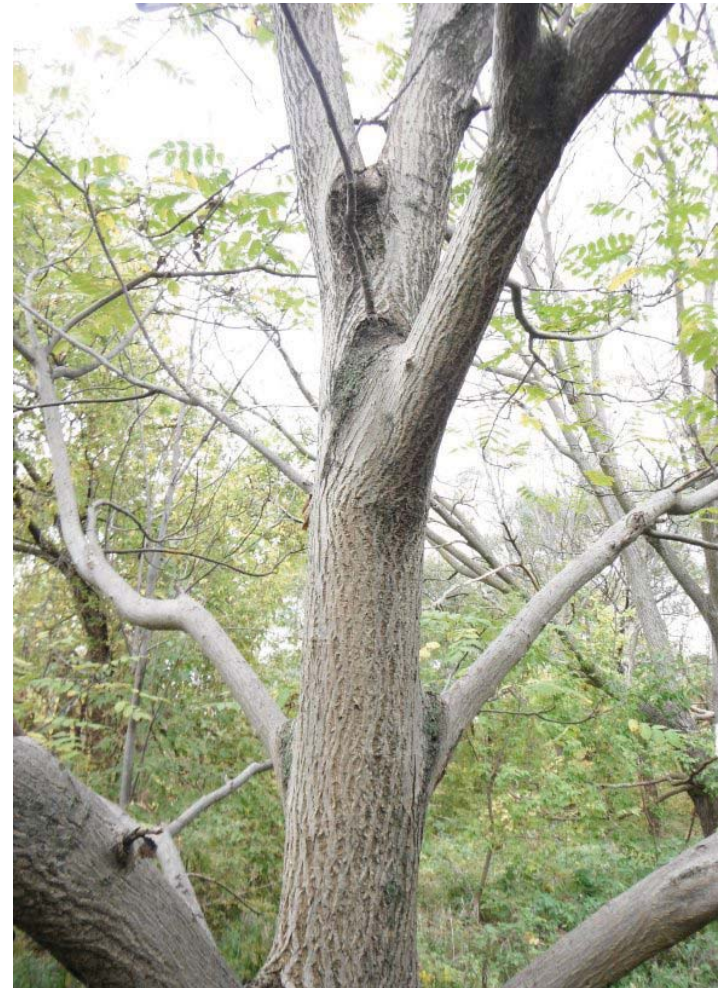


	Site Boundary		TRCA Conservation Area		Railway
	Trail Points		Forest Area		Trail
	Railway Crossing		Significant Forest Area		Watercourse

3

Background Review – Natural Heritage

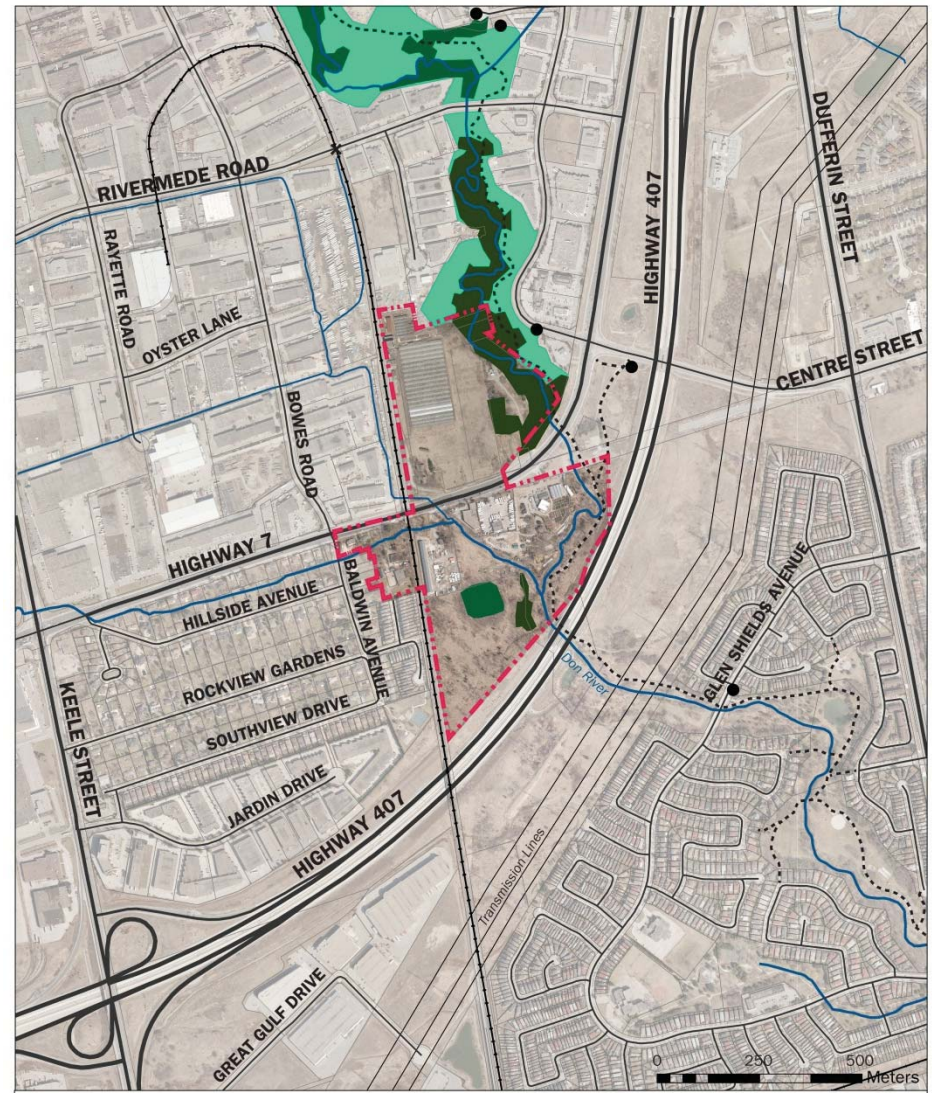
- Most significant ecological feature and functions are associated with Don River corridor
- The corridor is disturbed but is the most intact remnant habitat
- The corridor functions as a migratory and landscape linkage
- The limits of the valley feature will be determined with the TRCA and City
- Restoration and enhancement of the valley would improve overall system and would diminish cultural community impacts
- Should the valleylands south of Highway 7 ever become public lands, restoration in this area could also occur



3

Background Review – Natural Heritage

- Habitat Suitability Analysis for Blanding’s Turtle completed by Dougan
- Preliminary results:
 - There is no suitable overwintering habitat in the study area
 - Most suitable nesting habitat seen in the area is associated with the rear yards of plant nursery and the rail embankments



	Site Boundary		TRCA Conservation Area		Railway
	Trail Points		Forest Area		Trail
	Railway Crossing		Significant Forest Area		Watercourse