

Welcome to the **Velmar Downs Park Improvements**

Public Open House | Nov. 27, 2024



About the project

Proposed improvements are coming to Velmar Downs Park!

The City of Vaughan is updating the playground, basketball court and plaza at Velmar Downs Park through the ongoing Parks Infrastructure Renewal Program. This program identifies renewal and replacement priorities for park infrastructure based on age, condition and accessibility, among other factors.

Timeline

Design options

Fall 2024

Present design options to the community and gather feedback about preferences and desires.

Final design

Winter 2025

Share final design for park improvements and refine as needed.

Detailed design

Spring 2025

Detailed design and preparation of documents for construction.

Construction

Spring 2026

Construction of playground, basketball court, plaza and shade structure.



Community Engagement Phase 1



Community Engagement Phase 2

Please note this timeline may be subject to change.

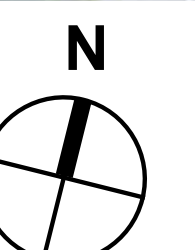


We are seeking community feedback on:

- Overall park layout options
- Playground components
- Shade structure and playground style options

Rutherford Rd.

Velmar Dr.



0 5 10 20 40m

Existing features

Park features to be updated:

1 Senior playground



2 Junior playground



3 Plaza



4 Basketball court

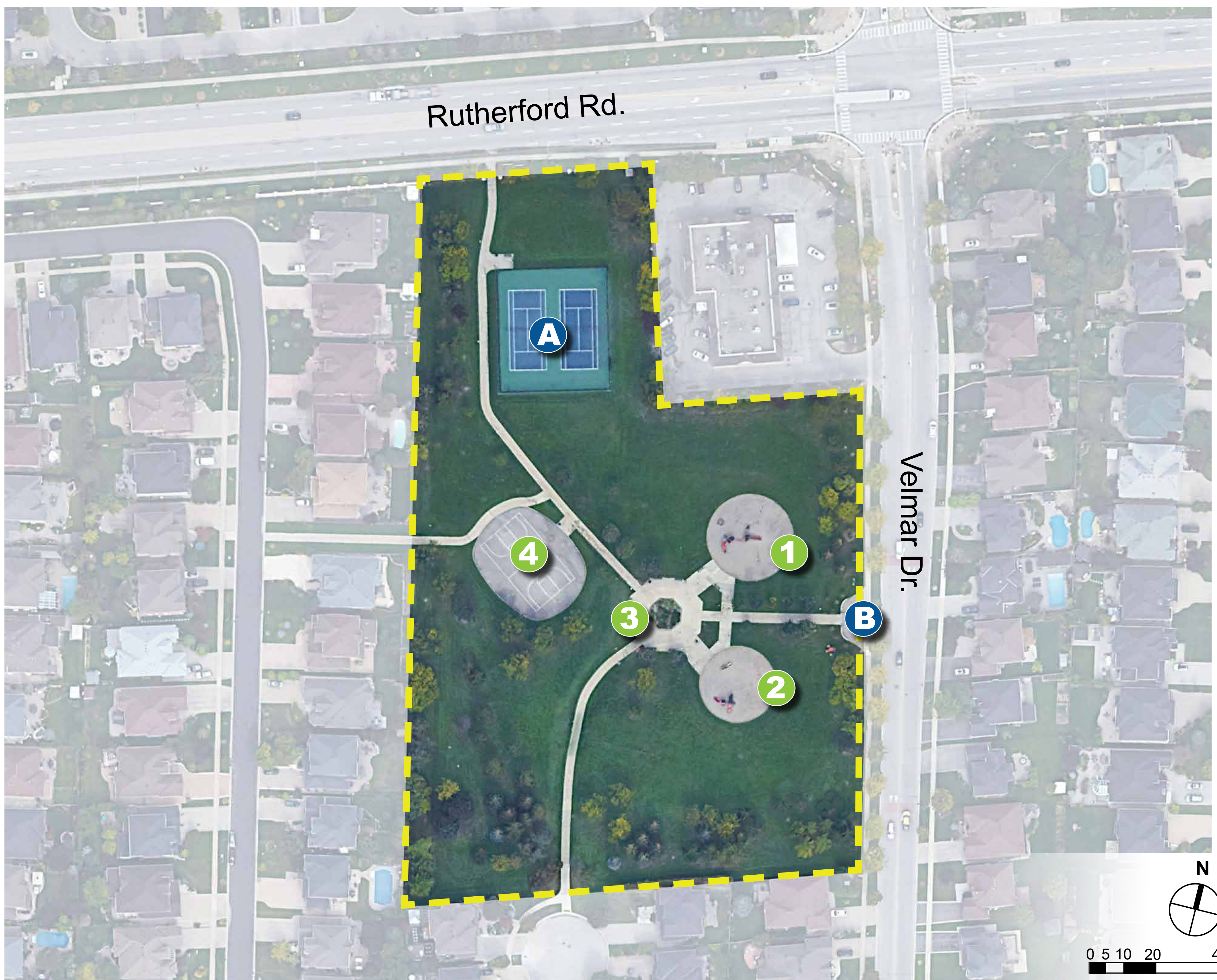


Park features that will remain the same:

A Tennis court



B Entry gate



Park layout

After reviewing the amenities eligible for renewal and the costs associated, City staff have come up with three different layout options, each with its own trade-offs.

All three layouts would cost roughly the same amount to construct and include:

- 1 A new shade structure**
with accessible picnic table seating below.
- 2 Updated basketball court**
with new paving, linework and posts.
- 3 Updated paving**
in the existing plaza.
- 4 Updated playground**
with new play equipment and engineered wood fibre mulch.

Layout 1

The central plaza

In this design option, the existing layout of the park is preserved. The plaza continues to serve as the central feature, with park amenities arranged around this gathering space.



Layout 2

The play hub

In this design option, the junior and senior playgrounds are combined to create a shared playspace, with the central plaza serving as a seating area next to the playground.



Layout 3

The central garden

In this design option, the park amenities are arranged around a central garden and circular pathway. A new shade structure is added north of this pathway to create a buffer between the play area and the main circulation route through the park.

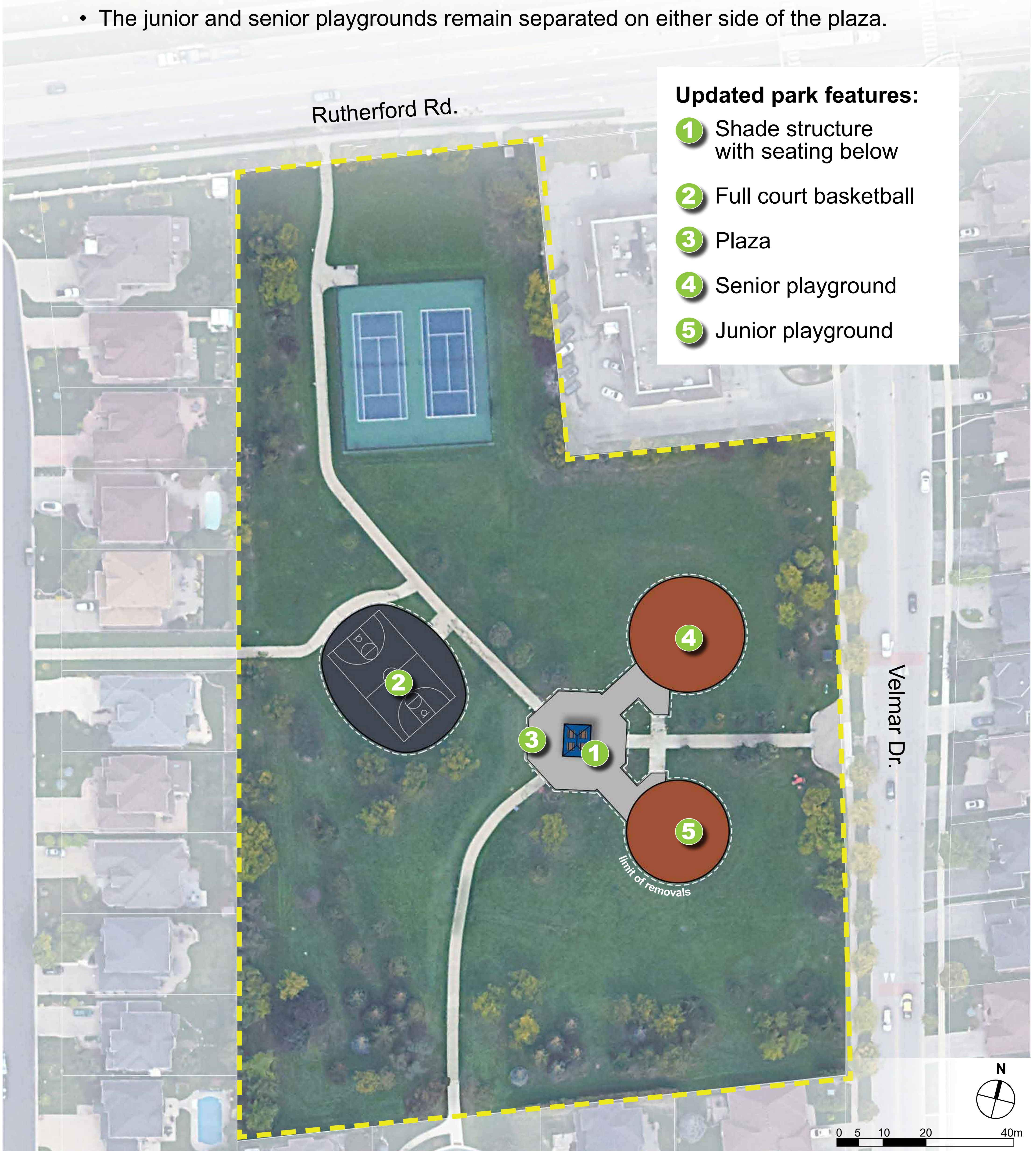


Layout 1

The central plaza

What separates this design from the others?

- The full-sized basketball court remains in the same location.
- A new shade structure with picnic table seating is added to the central plaza.
- The junior and senior playgrounds remain separated on either side of the plaza.



Layout 2

The play hub

What separates this design from the others?

- The existing full-sized basketball court is reduced to a half-court in the same location.
- A new shade structure with picnic table seating is added to the central plaza.
- The junior and senior playgrounds are combined to create a shared playspace.
- A seating area with umbrellas for shade is added next to the playground.



Layout 3

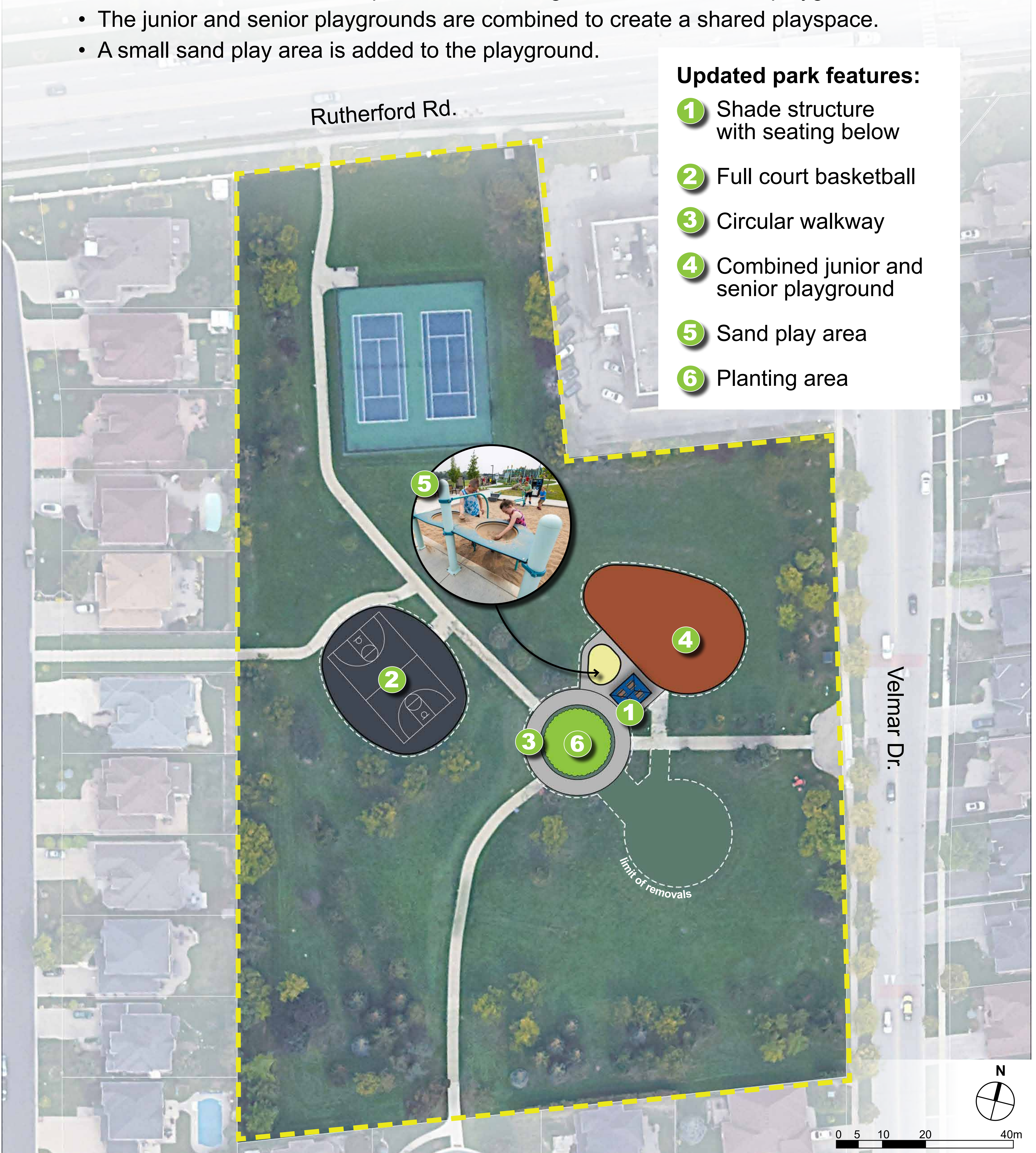
The central garden

What separates this design from the others?

- The full-sized basketball court remains in the same location.
- A new shade structure with picnic table seating is added next to the playground.
- The junior and senior playgrounds are combined to create a shared playspace.
- A small sand play area is added to the playground.

Updated park features:

- 1 Shade structure with seating below
- 2 Full court basketball
- 3 Circular walkway
- 4 Combined junior and senior playground
- 5 Sand play area
- 6 Planting area



Shade structure style options

There's an opportunity to add a new shade structure to the park and we're currently considering two different style options. Both styles will cost roughly the same amount and include accessible picnic table seating below. Regardless of the style, the structure itself will cover approximately 50 square meters and be steel as this material offers the greatest protection from both sun and rain.



A. Traditional steel structure

The traditional design style emphasizes architectural details and character. A shade structure in this style may be either a four sided hip roof where all sides of the roof slope downwards from the peak or a six sided gazebo.



B. Contemporary steel structure

The contemporary design style embraces minimalism with a sleek, edited aesthetic. A shade structure in this style may feature a monoslope roof or a vented roof that has two sloping sides.

Playground style options

There's an opportunity for the improved playground to have a completely new look and feel! The following three playground styles are under consideration. Regardless of the style chosen, the playground will be accessible with engineered wood fibre surfacing. Read the description of each below and let us know which stands out to you.



A. Traditional play

Traditional playground equipment is typically supported by a steel structure. This steel structure may support and connect slides, swings, play panels, monkey bars and more. Typically, this type of equipment offers the greatest quantity for the investment.



B. Rope play

Playgrounds with rope play structures are among the most versatile additions to parks. This playground style can include dynamic structures that encourage physical play.



C. Nature play

Natural playgrounds incorporate natural materials into the play space, such as logs or stones. They are more environmentally conscious and inspire imaginative play. They do, however, tend to be more expensive than traditional steel and rope play structures, therefore **choosing this option would lead to fewer pieces of play equipment.**